

HÄFELE



AQUASYS RANGE OF LIGHT MIRRORS

MULTI-FUNCTIONAL CONVENIENCE

ABOUT

Give your designs the perfect touch in the bath, vanity or closet areas with Häfele's Aquasys Range of Light Mirrors, consisting of the Aquasys, Aquasys X+ and Aquasys X Series. Beautifully designed, the mirrors add value, functionality and style to any interior space.

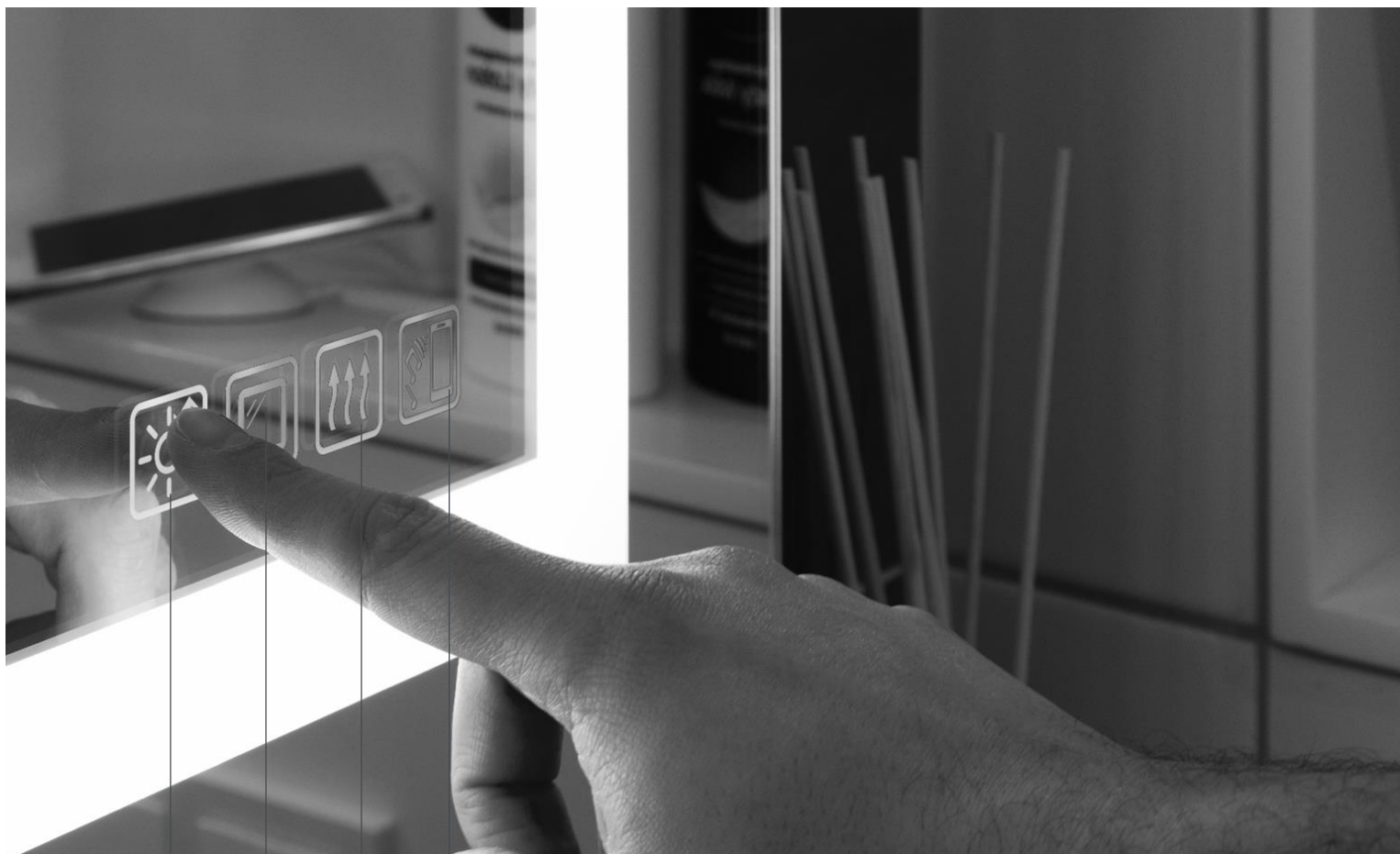
The versatile mirrors come fully assembled and unite the functions of make-up lighting, room lighting and mood lighting in an elegant design. The front light, in natural and warm white, equipped with a memory function offers excellent colour trueness that exceeds the market colour rendering indexes making it very suitable as a make-up light. All functions are controlled via touch keys that are integrated into the mirror.

These mirrors are easy-to-install and come fully-assembled with a mounting track for installation. With the option to rotate the mirror by 90 degrees, they are a perfect fit for any interior décor or style.

The top-line models from the Aquasys Series within the Aquasys Range include mirrors that are equipped with an in-built demister (prevents condensation on the mirror during and after a shower) and a sound system. The remaining models from the Aquasys X+ and Aquasys X Series come either without the Demister or the Bluetooth Capable Transducer System or both.



FEATURES



Bluetooth Capable Transducer System

- Plays music from your mobile on the sound system integrated into the mirror



Demister (Mirror Heater)

- Prevents the mirror from fogging up



Background Lighting

- Functions as a source of mood and ambient lighting
- Operates independently from the Front Lighting



Front Lighting

- Offers adjustable lighting option, from warm white to natural white
- Creates desired ambience from relaxing to invigorating
- Comes equipped with a memory function

Please Note: Not all models within the Aquasys Range of Light Mirrors include every feature mentioned above. Only the top-end models from the Aquasys Series within the Aquasys Range come equipped with all the four features. The remaining models come either without the Demister or the Bluetooth Capable Transducer System or both. For more information please refer to the next page.

RANGE OVERVIEW



The Aquasys Range of Light Mirrors consist of 3 series: Aquasys, Aquasys X+ and Aquasys X.

AQUASYS

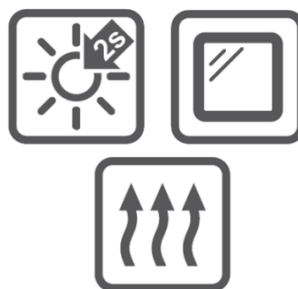


The mirrors from the Aquasys Series are top-of-the-range models and come feature packed with the following:

- Front Lighting
- Background Lighting
- Demister (Mirror heater)
- Bluetooth Capable Transducer System

Application: Bathrooms

AQUASYS X+



The mirrors from the Aquasys X+ Series include mid-range models which have the following features:

- Front Lighting
- Background Lighting
- Demister (Mirror heater)

Application: Bathrooms

AQUASYS X



The mirrors from the Aquasys X Series provide economical options for those looking for mirrors with:

- Front Lighting
- Background Lighting

Application: Dressing Rooms, Living Rooms & Bathrooms

FUNCTIONALITY

1. Front Lighting



- The front lighting in the Aquasys Light Mirrors can be adjusted from Warm White (2700 K) which imparts a relaxing, spa-like aura to your interiors to Natural White (4000 K) which is ideal for applying make-up and getting ready
- The switch needs to be pressed for 1.5 - 2 seconds for the mirror to change the colour of the light
- The mirrors come equipped with a memory function where they remember the last light colour selected by you and bring that colour up when restarted
- The high quality front lighting (CRI >90) offers a realistic perception which is perfect for applying make-up and for use in the vanity area. The brightness also helps prevent the creation of shadows caused by the overhead ceiling lights



2. Background Lighting



- The background lighting, Warm White (2700 K), adds the much needed zing and drama to enhance the Aquasys Light Mirrors and a dimension of style and aesthetics to match the individualist grace of your homes
- The high quality lighting (CRI >90) augments the interior décor and complements the traditional walls of your homes effectively



FUNCTIONALITY

3. Demister (Mirror Heater)



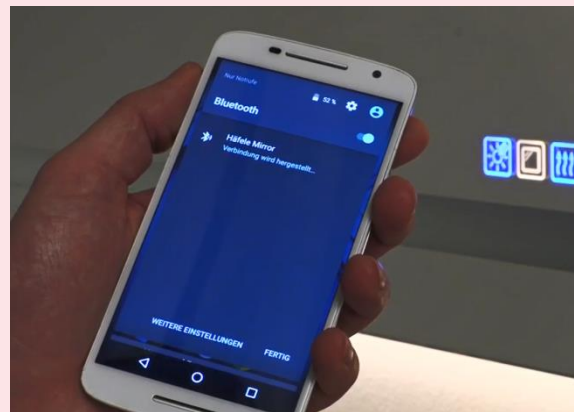
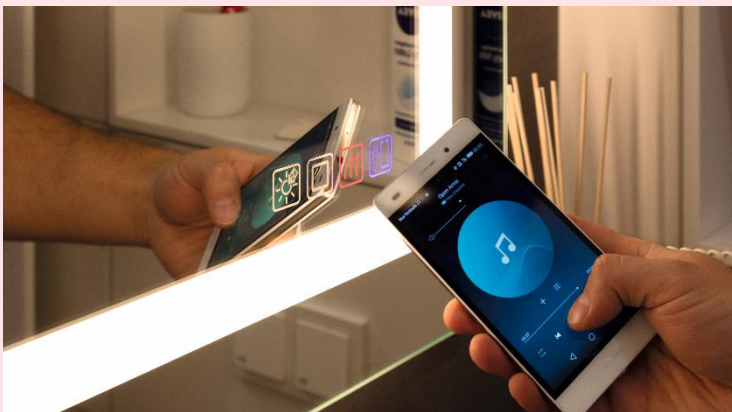
- The demisters built inside the Aquasys Light Mirrors heat up the glass surfaces to a temperature high enough to prevent the hot humid air from hot showers to condensate on the mirror glass surfaces
- They go on an automatic stand-by after staying active for 45 minutes in order to save energy

Please Note:

1. The mirror heater does not replace room heating
2. This feature is available only in the mirrors falling under the Aquasys and Aquasys X+ Series of the Light Mirror Range



4. Bluetooth Capable Transducer System



- The mirrors connect to smartphones via Bluetooth (Device Name: Häfele Mirror); all that needs to be done is to enter the set password (Password : 0000)
- They can save up to 2 users in their system and only one user can stay connected to a mirror at a time. The connection distance works up to 3-6 meters depending on wall construction
- The latest user will automatically connect to the mirror once in range, while the second user will have to connect manually after the latest user switches off his / her smartphone Bluetooth
- When a third user connects to the mirror, the first user will automatically get deleted from the system
- The inbuilt Transducer systems transform the mirrors into sound speakers to amplify the volume and the acoustic material inside the mirrors together with the wooden back plate further improve the sound performance

Please Note: This feature is available only in the mirrors falling under the Aquasys Series of the Light Mirror Range



SIZE VARIANTS & PRODUCT SPECIFICATIONS

Size Variants and Dimensions



900 (W) x 600 (H) x 54 (D) mm



600 (W) x 900 (H) x 54 (D) mm

Please Note: This size variant can also be installed vertically



900 (W) x 900 (H) x 54 (D) mm



1200 (W) x 900 (H) x 54 (D) mm



900 (W) x 1200 (H) x 54 (D) mm

Please Note: This size variant can also be installed vertically

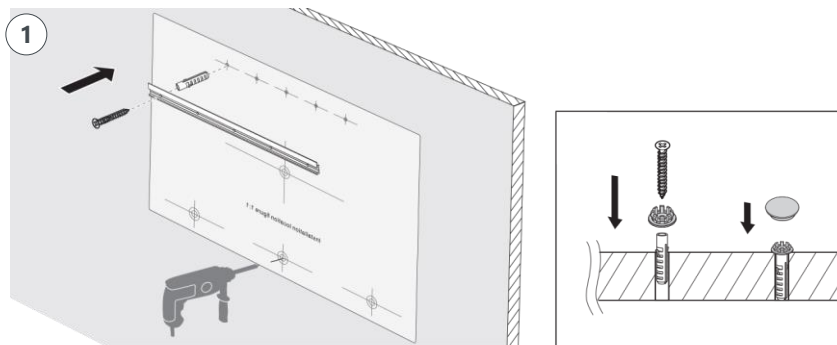
Product Specifications

Article No.	983.19.010 (Aquasys) 983.19.110 (Aquasys X+) 983.19.210 (Aquasys X)	983.19.020 (Aquasys) 983.19.120 (Aquasys X+) 983.19.220 (Aquasys X)	983.19.030 (Aquasys) 983.19.130 (Aquasys X+) 983.19.230 (Aquasys X)
Dimensions (W x H x D):	900 x 600 x 54 mm	900 x 900 x 54 mm	1200 x 900 x 54 mm
Colour Temperature:	Warm White (2700K) & Natural White (4000K)		
• Front Lighting			
• Back Lighting	Warm White (2700K)		
Front Lighting Lumen Output:			
• Warm White	1080 Lm	1300 Lm	1560 Lm
• Cool White	1230 Lm	1470 Lm	1764 Lm
Colour Rendering Index:	> 90	> 90	> 90
Wattage:	95 W	102 W	111 W
Lux @ 70 cm (luminous Flux / Area):	500		
Nominal Voltage:	DC 12 V		
Input Voltage:	100-240 V; 50-60 Hz		
Material:	LED Profile – Aluminium; Rear Back Plate – Wood		
Switch Type:	Touch LED Illuminated (Operation – Warm White, Stand-by – Blue)		
Demister (Mirror Heater):	Standby after 45 minutes (only applicable for Aquasys and Aquasys X+ Series Mirrors)		
Sound System:	Bluetooth Transducer System; Password – 0000 (only applicable for Aquasys Series Mirrors)		
Bluetooth Frequency:	2.4 GHz (only applicable for Aquasys Mirrors)		
Degree of Protection:	IP 44 (Splash-proof for use in wet rooms)		
Warranty:	2 Years		
Energy Efficiency Class:	A		
Certification:	BIS/ UL / CUL / SAA / CE / TÜV certified as per EN 1036-1:2007 against corrosion resistance		

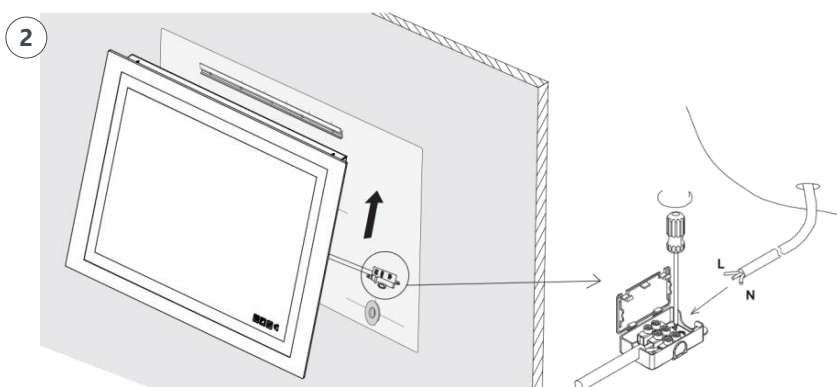
Please Note: The Aquasys Range of Light Mirrors contains integrated LED lights which cannot be replaced. Once the LED lights reach the end of their life and the warranty period is over, the entire mirror will have to be replaced.

INSTALLATION & COMPONENT DETAILS

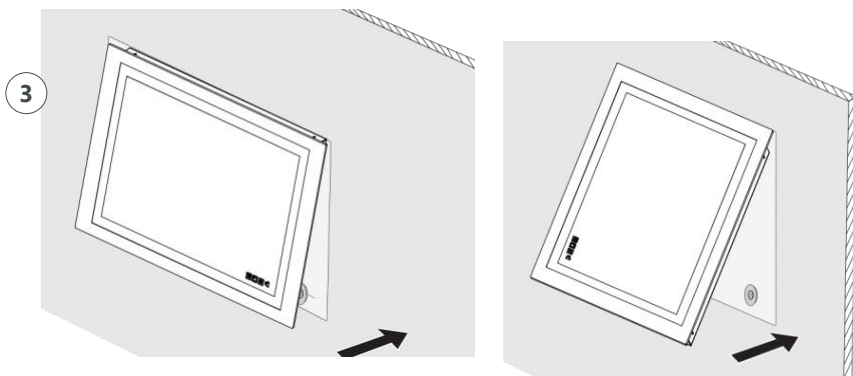
Installation Details



- Drill holes of $\varnothing 8$ mm as demonstrated in the drilling template and insert wall plugs into them
- Place the mounting profile parallel to the drilled holes and drill in the screws through the cover cap adapters and the mounting profile
- Once the profile is installed in position, fix the cover caps on top of the cover cap adapters

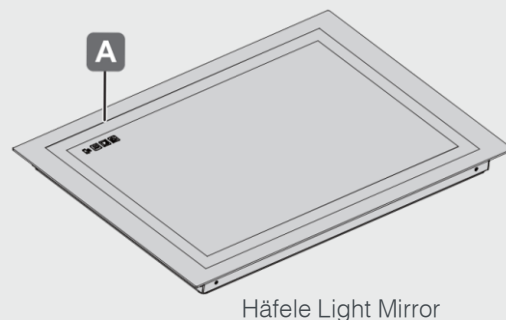


- Open the end terminal cap to connect the Live, Neutral & Earth wires
- Once connected, the end terminal box can be concealed or recessed into the wall or any furniture surface near the mirror.

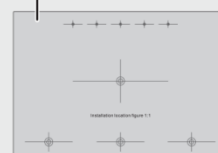


- Hook on the mirror either horizontally or vertically onto the mounting profile

Components



B Drilling Template



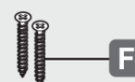
Mounting Profile



Cover Caps



Cover Cap Adapters



Screws



Wall Plugs

No. of components supplied with each article no.:

	A	B	C	D	E	F	G
983.19.010							
983.19.110	1	1	1	3	3	8	8
983.19.210							
983.19.020							
983.19.120	1	1	1	3	3	8	8
983.19.220							
983.19.030							
983.19.130	1	1	1	5	5	12	12
983.19.230							

ORDERING INFORMATION



Series Name	Article No	Dimensions (W×H×D)	Net Weight (Kg.)	Front Lighting	Background Lighting	Demister (Mirror Heater)	Bluetooth Capable Transducer System
Aquasys	983.19.010	900 × 600 × 54	10.82	•	•	•	•
Aquasys	983.19.020	900 × 900 × 54	14.88	•	•	•	•
Aquasys	983.19.030	1200 × 900 × 54	19.38	•	•	•	•
Aquasys X+	983.19.110	900 × 600 × 54	9.70	•	•	•	
Aquasys X+	983.19.120	900 × 900 × 54	13.30	•	•	•	
Aquasys X+	983.19.130	1200 × 900 × 54	18.00	•	•	•	
Aquasys X	983.19.210	900 × 600 × 54	9.40	•	•		
Aquasys X	983.19.220	900 × 900 × 54	13.00	•	•		
Aquasys X	983.19.230	1200 × 900 × 54	17.50	•	•		



Mumbai Corporate Office:

Office No. 3, Building "A", BETA,
I Think Techno Campus, Off J.V.L.R.,
Opp. Kanjurmarg East, Mumbai – 400 042.
Tel.: 022 6142 6100 • Fax: 022 6702 0531.

For Enquiries SMS "HAFELE" to 56070

Toll Free Customer Care: 1800 266 6667
Customer Care WhatsApp: +91 97691 11122
customer care@hafeleindia.com
info@hafeleindia.com

Follow us on

