



LUXURY BATHROOMS



Introduction

Dear Customers,

Hafele has now pioneered the way fittings are sold in India for over 12 years. Being a German company our foremost concern has always been to offer our customers, premium quality products at approachable prices paired with solution based services. Häfele takes this concept to the next level with its Häfele ICONIC brand. Häfele ICONIC simply signifies the “Best of the Best” from each product category. Only the most exclusive and advanced products from Häfele’s product range have been included here so that our discerning customers are ensured that they find product excellence which leads on a global level.

Through the Häfele ICONIC brand, we introduce to you our range of super-premium luxury bathroom products and fittings that would convert your hours spent in the bathroom into pure recreational bliss.

These products have been carefully included in our range to bring you the leadership and authority in reigning technologies from around the world. They are designed to bring convenience, style and leisure to your life at home.

Häfele ICONIC introduces you to an elegant range of washbasins and bathroom faucets closely inspired by nature from the house of Webert, Italy. Webert comes with a rich tradition and expertise in the area of bathroom products with a core competency in manufacturing washbasins and bathroom faucets. Webert’s washbasins are made of MineralMarmo – a highly durable material comprising of precious mineral charges and polyester resin. This unique material gives inherent warmth to the washbasin surface in contrast to the cold harshness of ceramic. Webert bathroom faucets come with fluidity in design combining inimitable functionality and water-saving technologies - be it a breadth of sinuosity or clean, straight lines, Webert has a faucet to accommodate every unique taste.

Through our range of Häfele ICONIC bathroom products, we can holistically meet the preference of every member of your home – even if that is the inquisitive eye of your kids. Our vibrant range

of child-friendly washbasins, vanity units and accessories from BOING, Spain takes an ideal place in your kids’ bathroom adding the much needed spunk and colour to it. These washbasins are made of polyurethane – a flexible and eco-friendly material with no sharp edges, making it extremely child-safe. BOING washbasins come in a host of vibrant colours to choose from and are water-proof, hygienic and extremely resistant to high temperatures and rough-handling.

To complete this range of luxury bathroom fittings, Häfele ICONIC brings to you pure exuberance in the form of an elegant range of shower systems from Edelbad, Korea. The advanced range of shower systems from Edelbad meticulously integrates sound and light systems to add to the experience of bathing by providing a therapeutic appeal to the entire process. The bath faucets from Edelbad come with a self-generating system to save energy. Made of high grade Stainless Steel and plated with layers of chrome, they automatically put up a tough fight to corrosion or deterioration through excessive use of water.

So come and experience the Häfele ICONIC life with our super-premium range of luxury bathroom products. Give your family a fresh and healthy lifestyle; give yourself the convenience of true functionality!

Enjoy.

Jurgen Wolf.
Managing Director
Häfele India Pvt. Ltd.

Hafele

Reassuring Expertise



"For over 9 decades, we've been helping people make more of their homes."

Established in Germany, and now operating worldwide, we specialise in the fittings, hardware and systems that improve the way your home works. So when you choose our products as part of your new or reformed home, you know you're getting the benefit of extensive knowledge and decades of experience.

And we're still a family business, owned and managed by family members who really care about the products

and service we provide. You can rely on our commitment to the highest standards of quality and reliability, founded on a long tradition of German engineering where attention to detail is second nature.

All our home improvement ideas are built to last – day in, day out – we want you to get the very best from every corner of your home, for many years to come."

Hafele

Worldwide



With its origin in 1923 in a small town named 'Nagold' from the Swabian region of Germany that nurses a passion for hardware technology, it is no surprise that Hafele has lived up to its roots through a successful presence in the architectural and furniture hardware industry for over 93 years now. Today, Hafele's worldwide penetration includes 38 subsidiaries across Europe, America, Asia, Australia and New Zealand. In addition to this it has 9 sales offices in other countries. The Hafele headquarters, 5 manufacturing units and 10 sales offices are located within Germany. The company also owns one of the largest and most sophisticated warehouses in its home country. The Hafele worldwide workforce is empowered by a base of over 6800 employees.

The group services over 150,000 customers across the globe through its extensive range of hardware products and a comprehensive logistics system. In addition to this, Hafele also provides consultative services to its customers, educating and advising them about buying the correct hardware as per their requirements. With this level of market penetration and ability to handle worldwide demand, it comes as no surprise that the company is an authority in the segment of home interior solutions; what is pleasantly surprising, though, is that in spite of its size, Hafele still remains a family owned and run business with a unique, friendly and value-centric work culture which is strongly followed among all its subsidiaries.

Hafele India

Hafele India, a subsidiary of the Hafele Global network since 2003, lays pride in its diverse range of quality products, well-networked channel partners and unmatched service to customers. The ability of the company to understand the diverse Indian market and adapt to the changing tastes and trends, has made it an authority in the field of architectural hardware, furniture fittings and kitchen fittings and accessories. The company also has a strong presence in related industries through its independent product verticals namely Appliances, Lights and Sanitary catering to the focused demand from these industries. We service our customer demand with a base of over 600 employees present in all regions of the country and through a comprehensive Logistics Centre located 40 kilometers from our Head Office in Mumbai along with independent regional distribution centres in Bangalore, New Delhi and Kolkata respectively. This service is complete with our equipped Customer Care division that handles

and resolves all customer queries and issues with speed and efficiency. Our staff has more than tripled in the last few years and we will continue to add more talent to our team to provide better and more services to our customers across the country.

The company has four flagship showrooms in Bangalore, Delhi, Mumbai and Kolkata respectively, apart from the well-networked franchise and dealer base that it already has in different parts of the country. With this successful backing and the promise to grow in manifolds, the company is on an expansion mode to meet the ever-growing demands not only from India but also its neighbouring countries. Owing to this, Häfele India has spread its operations to countries like Nepal, Bangladesh, Bhutan and has a Branch Office, Design Showrooms and Distribution Centre in Sri Lanka.



Hafele Iconic



We at Hafele, have the expertise to solve your home sanitation needs with options that will also cater to your individual preferences. We have transformed the best international technologies and cutting-edge designs into a holistic sanitary range that holds the potential to meet every need of your home. We have in our range everything, from never-seen-before designs in Bathroom faucets to such exuberance and versatility in Shower fittings that would leave you in complete awe.

Being a German company our foremost concern has always been to offer our customers premium quality products paired with solution based services. Now, Hafele is taking this concept to the next level with the introduction of the Hafele ICONIC brand. Hafele ICONIC simply signifies the “Best of the Best” from each product category. Only the most exclusive and advanced products from Hafele’s product range have been included here so that our discerning customers are ensured that they find product excellence which leads on a global level.



Through the Hafele ICONIC brand, we bring the versatility from different parts of the Globe in the form of vanity units, wash basins, shower fittings and faucets. If you aspire to create your bathroom exactly the way you want it, we have the ability to match your individuality with our fittings. Our range also caters to the inquisitive eye of your children with an exclusive collection of attractive, child-friendly soft washbasins from Spain. These washbasins are available in a host of colours giving your child the option to choose his favourite pick that matches the overall bedroom and

bathroom hue. Our elite collection of shower and steam fittings can recreate the experience of relaxation for Spafreaks who can spend endless hours in and around water.

Take a dip into some of our life-changing sanitization ideas and reform the cleaning and washing areas of your home to include the much needed splash of functionality with our efficient and smart range of Hafele ICONIC luxury bathroom fittings!

Hafele Iconic: Brands



BOING

BOING from Spain is revolutionizing the concept of wash basins and bathroom accessories. Their soft sinks made from "PUR" Polyurethane which is soft and warm to the touch, come in striking colours bringing fun and enjoyment to your bathroom. The elasticity and softness of the material also provides unparalleled safety for the user should they slip and fall. BOING Washbasins and accessories are also resistant to chemicals, high temperatures and mildew. They are easy to clean and maintain under the toughest conditions -Practical, colourful fun for the whole family.

EDELBAD

The history of Edelbad revolves around passion. EDELBAD, a young, new age manufacturer from Korea is setting global benchmarks for highly intelligent and cutting edge shower systems at the highest quality level with unique product features like touch operation and the integration of light and sound. These revolutionary products are creating a storm in Europe and are now available from Hafele in India.



WEBERT

The history of Webert revolves around passion. Primarily the passion that Webert puts into teamwork, which involves creating lines that embody elegance while providing scope for young, modern and emerging designs. From this passion for modern creations comes total respect for the people who choose their products. They demand refinement, reliability, functionality and value for money. These have been the guiding values since 1975 for Webert. These values have transformed Webert into a hallmark for innovation, quality and precision in the world

of Italian bathroom fittings. And you can still find all these admirable qualities today in their new range of products presented here.







CONTENTS

INTRODUCTION

PAGE

1-13

WEBERT

PAGE

14-105

BOING

PAGE

106-133

EDELBAD

PAGE

134-155







Bathroom

PAGE

14 - 105

BEAUTY AREAS

- 20 GRETA
- 24 ANGELICA

BATHROOM MIXERS

- 30 ARIA
- 44 WOLO
- 58 LIVING
- 74 FLAUTO
- 84 LOTHO
- 92 CONIC
- 100 RIVOLI

CERTIFIED QUALITY

The procedure and product quality is the value that is Webert's main characteristic.

Not abstract concepts, but a real situation certified by primary international accredited companies: such as:



ACS
Certificate France



France



Germany



Switzerland



WaterMark
Australia



C US
USA - Canada



BRASS

All ranges of Webert products are characterized by the use of first quality raw materials. The brass metal used for casting, forging and mechanical operations contains a very low percentage (<2%) of lead in compliance with the levels fixed by the present International Norms applied to drinking water.



FLEXIBLES HOSES

The flexible hoses used in the full range of Webert products are in conformity with the national and international norms with regards to the materials in contact with drinking water, such as DVGW KTW Class A in Germany, the Dutsch KIWA, the English WRAS certificate, the Swiss SVGW, the French ACS, the NSF in the United States and the Australian Sai Global product certification.



CHROME PLATING

The quality of the coating on surfaces is very important to guarantee the working life of the product: in order to obtain a perfect result all galvanic processes are completely carried out inside the factory, using modern technologies being continuously updated. The depuration plant is connected to the manufacturing machinery and uses "zero waste" methods thus reducing the environmental impact.



PAINTING

The painting treatments are carried out using epoxidic and atoxic powders giving the products an excellent endurance against scratches, humidity, aggressive environmental conditions and UV rays.



PACKAGING

The packaging is carefully prepared to protect the product and guarantee the integrity and the esthetical quality up to the stage of installation, above all in order to prevent damages during transportation. Normally packaging stape of very resistant three folded carton boxes and internally the product is protected by sponges.



CERAMIC CARTRIDGES

The ceramic cartridges used in Webert products meet the requirements of the most important international standards such as EN, NF, ASME, ASSE, CSTB, AS/NZS 3718 and the parts in contact with water are approved by DVGW, WRC, NSF, KIWA et ACS. The 35 and 40 Ø cartridges ARE EQUIPPED WITH A DOUBLE CONTROL DEVICE OF FLOW RATES AND TEMPERATURE, enabling the consumer to adjust flow and temperature parameters according TO HIS NEEDS IN ORDER TO SAVE ENERGY AND RESOURCES.



INOX

The most exclusive taps from the Webert collection are produced with materials of higher quality than those used for the brass products; we indeed use the INOX AISI 304 L steel, which is most suitable for drinking water.



BUILT-IN PRODUCTS

All built-in systems of the Webert range have a double protection: a part is made of polistirene and protects the tap from the wall, in order to avoid the condensate from seeping into the wall and causing damp patches or the detachment of the coating. A further external protection is used to protect the finished parts during the installation or the coating finishing.



WARRANTY

Hafele offers 10 years warranty on Webert products against faulty workmanship and manufacturing defect from the date of Invoice.

'BEAUTY AREAS' THAT REFLECT YOUR STYLE

When beauty is around you, you are naturally inspired to imbibe it within you!

We have coined the term 'beauty area' to that part of your bathroom that takes care of your day-to-day beauty and hygiene needs. We bring to you our pioneering range of 'Beauty Areas' from Webert's Italy that have specially been created to give you a blend of practicality with comfort and beauty. This foundation is backed with a quest of bringing in new designs from leading International trends.

Deviating from the norm, our Beauty Area wash basins are made of Mineral-Marmo – a highly durable material comprising of precious mineral charges and polyester resin. This unique material gives inherent warmth to the washbasin surface in contrast to the cold harshness of ceramic.





GRETA



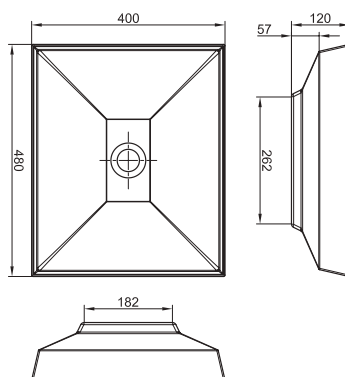


Pure lines and stable shapes - that's the design behind the GRETA Beauty Area. It creates a place dedicated to beauty thanks to its harmonious shapes and purity of design that gives you the ease to carry out your day-to-day grooming and cleaning activities.

GRETA is an innovative product that gives you the possibility to detach the basin from its base without any tools, leaving the wide top free to allow for easy cleaning without missing a spot.



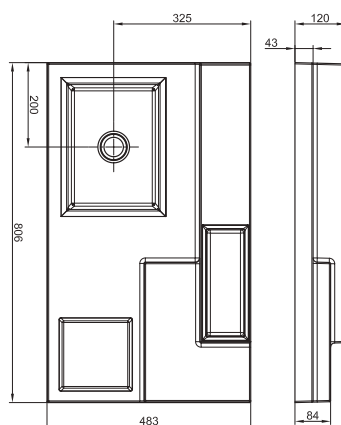
GRETA



Rectangular top mount basin in Mineralmarmo without pop up waste.

588.40.000

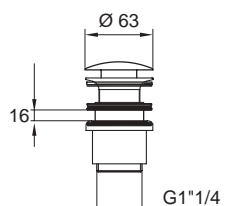
Finish: White



Base in Mineralmarmo without supports, with / without tap hole.

588.40.001

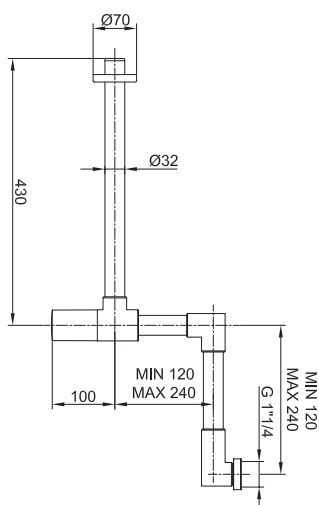
Finish: White



1"1/4 "Easy lift" automatic pop up for Greta and Angelica, with extractable plug and waste without overflow.

588.40.900

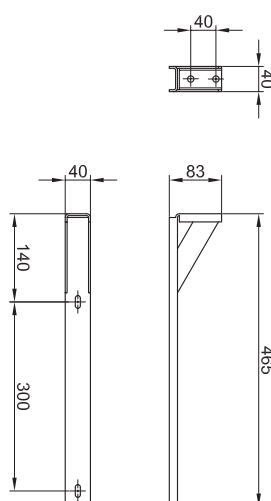
Finish: Chrome



Minimalist bottle siphon 1"1/4.

588.40.910

Finish: Chrome



Supports for base with fixing kit.

588.40.920

Finish: Chrome

ANGELICA

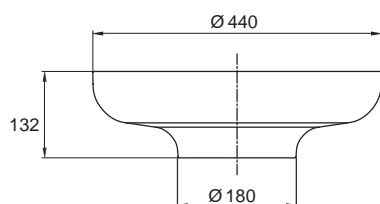




The sinuosity of lines and lightness in shapes make ANGELICA a collection naturally unique. Simple and functional at the same time, it is sensitive to accommodate your daily grooming activities with a distinctive style. Its organic shape adds a sense of fluidity to your dynamic bathroom environment.



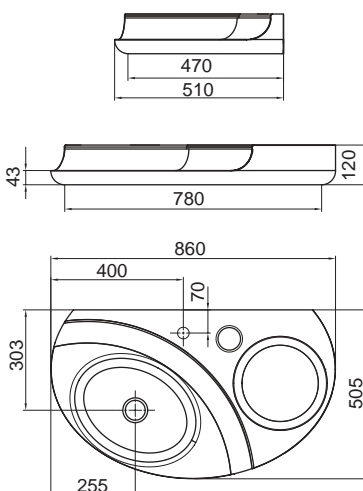
ANGELICA



Round top mount basin in Mineralmarmo without pop up waste.

588.40.020

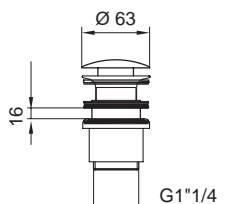
Finish: White



Base in Mineralmarmo without supports, with / without tap hole.

588.40.021

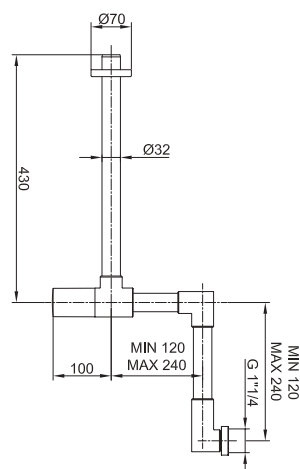
Finish: White



1"1/4 "Easy lift" automatic pop up for Greta and Angelica, with extractable plug and waste without overflow.

588.40.900

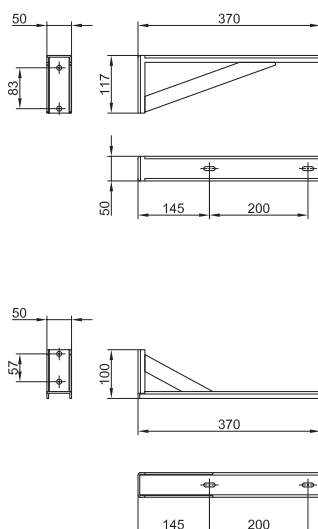
Finish: Chrome



Minimalist bottle siphon 1"1/4.

588.40.910

Finish: White



Supports for base with fixing kit.

588.40.921

Finish: Chrome

Easy lift is an innovative product as it gives you the possibility to detach the basin from its base without any tools, leaving the wide top free to be used as you like, as you can see in the image aside. The system is patented.

As you can easily remove the basin from its base or from the top, even in the most difficult spots cleaning becomes very simple and quick.

Easy to clean

Easy lift can be assembled on any type of countertop and washbasin. It's suitable both for new installations and for renovation (replacement of the old draining system). By installing Easy Lift, you can improve the hygiene of your bathroom and renovate the environment with a limited investment, because this does not require modifications or complicate works on the existing structures.





Faucets that combine functionality with inimitability in design

We know that you see the faucet not only as a source of water-flow but also as an ornament that crowns your washbasin or bathtub. Putting this into perspective, we have for you a contemporary range of bathroom faucets in modern and emerging designs. This range is engineered to give you every imaginable design that would best suit your taste with no compromise on functionality. Be it a breadth of sinuosity or clean, straight lines, we have a shape to accommodate your varying tastes.



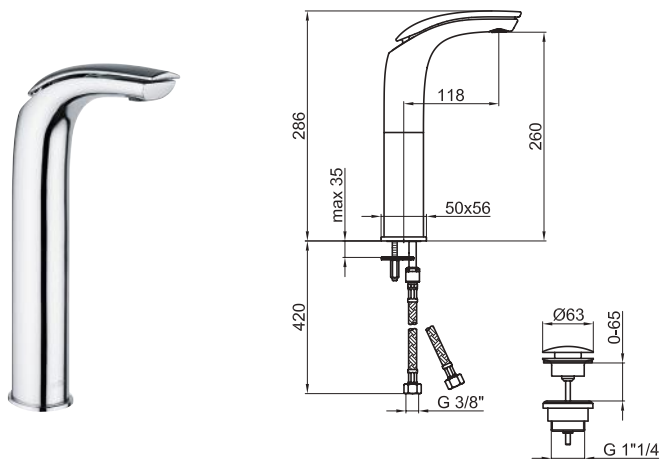


Aria

The ARIA Natural flow Bathroom mixer has an unmissable likeness to nature – it would automatically remind you of the stem of a flower that's bent by a gentle breeze. The entire ARIA collection is pervaded with dynamic energy as if it were created in a nature-tunnel; molded by water and designed by wind. The flowing water can't avoid channelizing into action through the perfect curves of its shape.



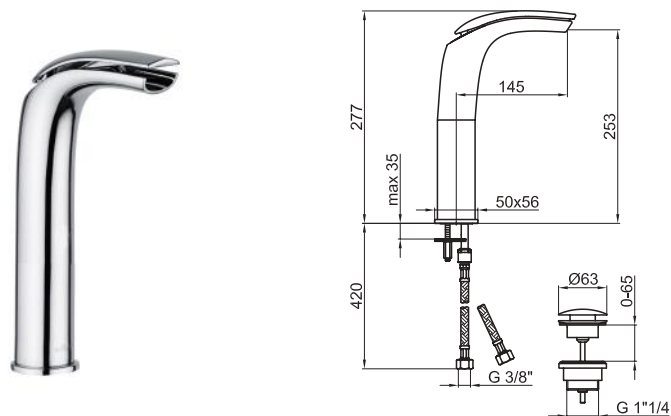




High single lever washbasin mixer with up & down pop-up waste, with 3/8" flex. hoses 37 cm.

589.65.002 - Chrome

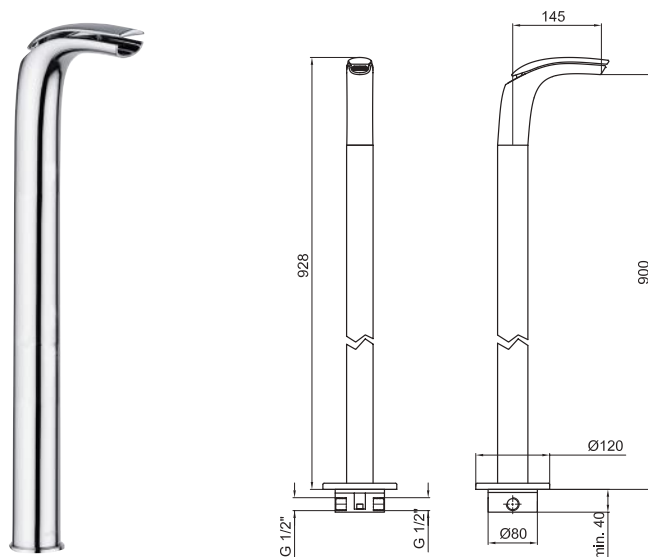
589.65.242 - Shiny white chrome



High single lever washbasin mixer cascade with up & down pop-up waste, with 3/8" flex. hoses 37 cm.

589.65.003 - Chrome

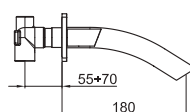
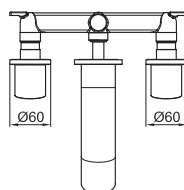
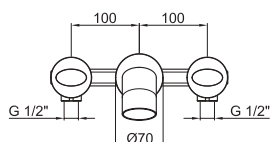
589.65.243 - Shiny white chrome



Single lever cascade floor mounted basin mixer.

589.65.012 - Chrome

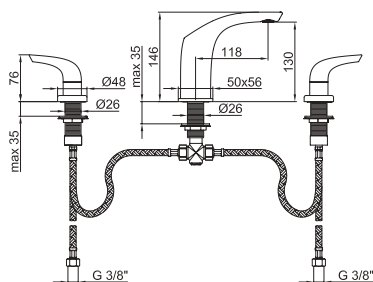
589.65.252 - Shiny white chrome



Concealed 3-holes washbasin mixer.

589.65.013 - Chrome

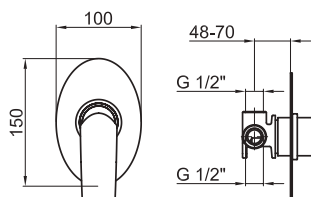
589.65.253 - Shiny white chrome



3-holes washbasin mixer with pop-up waste up & down.

589.65.014 - Chrome

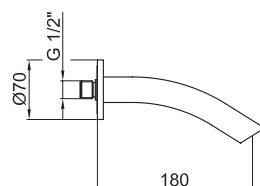
589.65.254 - Shiny white chrome



External part of concealed single lever washbasin mixer with Spout

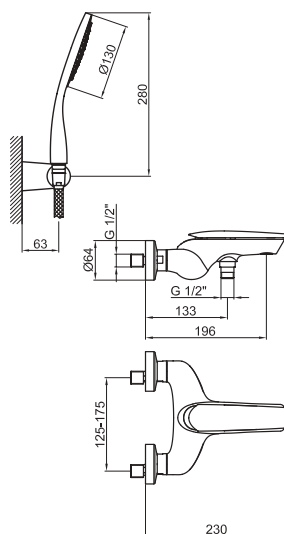
589.65.025 - Chrome

589.65.275 - Shiny white chrome



Concealed part for single lever washbasin mixer

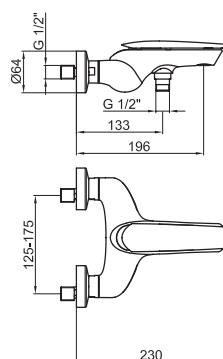
589.65.007



Single lever bath mixer with shower set complete of hose (150 cm), handshower and holder.

589.65.015 - Chrome

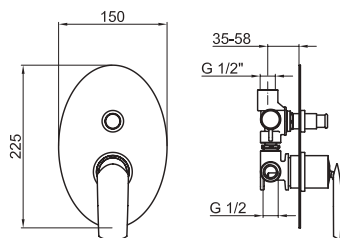
589.65.255 - Shiny white chrome



Single lever bath mixer without shower set.

589.65.016 - Chrome

589.65.256 - Shiny white chrome



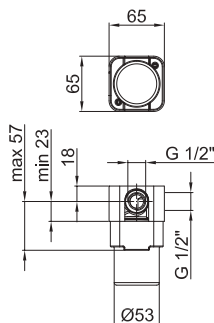
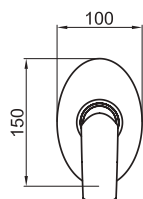
External part for concealed single lever bath/
shower mixer

589.65.021 - Chrome

589.65.261 - Shiny white chrome

Concealed part of shower mixer with diverter

589.65.020



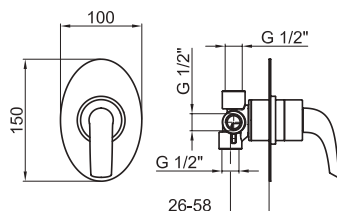
External part of concealed single lever shower
mixer

589.65.017 - Chrome

589.65.257 - Shiny white chrome

Concealed part for single lever washbasin mixer

589.65.007



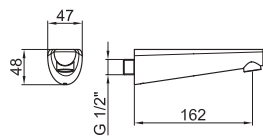
External part of concealed (3 - way) diverter

589.65.024 - Chrome

589.65.264 - Shiny white chrome

Concealed part of (3 - way) diverter

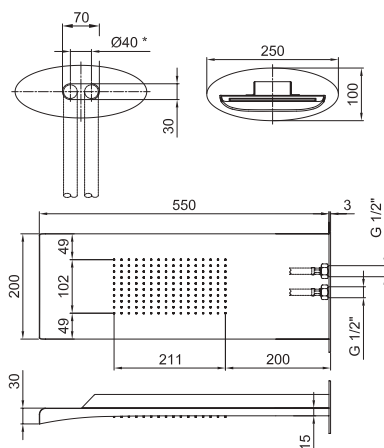
589.65.023



Spout for concealed bath mixer, 1/2" connection.

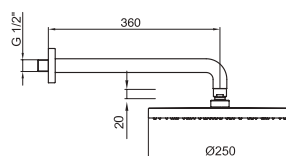
589.65.006 - Chrome

589.65.246 - Shiny white chrome



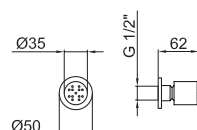
Shiny stainless steel multifunction cascade shower head with wall shower arm.

589.65.010 - Chrome



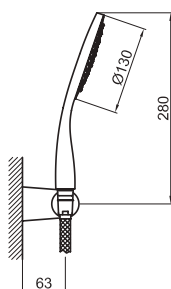
Shower arm with ball joint and ABS shower head

589.65.009 - Chrome



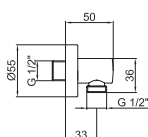
Lateral cylindrical body jet with 6 liters/min flow rate.

589.65.019 - Chrome



Shower set composed of holder, monospray handshower and flex hose.

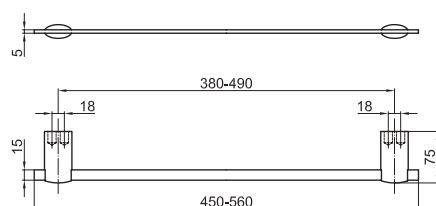
589.65.008 - Chrome



Wall elbow 1/2" M connection.

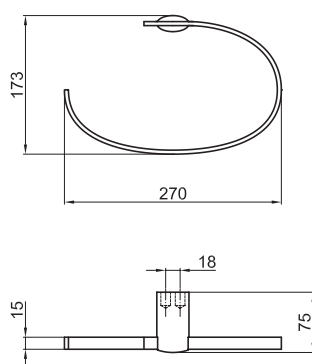
589.65.011 - Chrome





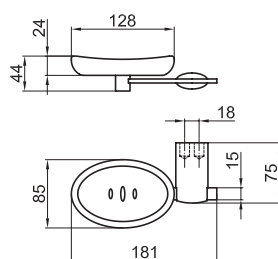
Brass towel holder.

589.70.010 - Chrome



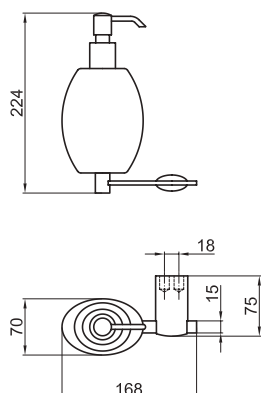
Ring shaped towel holder.

589.70.012 - Chrome



Wall mounted ceramic soap dish.

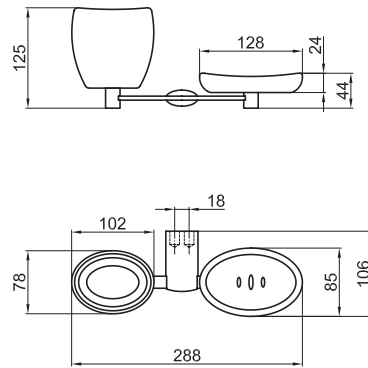
589.70.030 - Chrome



Wall mounted ceramic liquid soap dispenser.

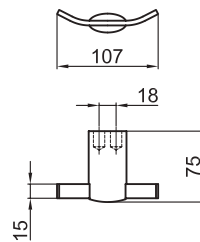
589.70.031 - Chrome

* Special Order on request



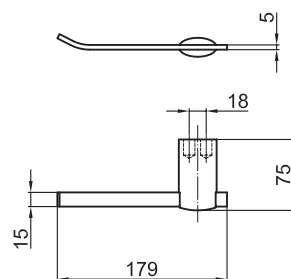
Wall mounted ceramic soap dish and tumbler.

589.70.040 - Chrome



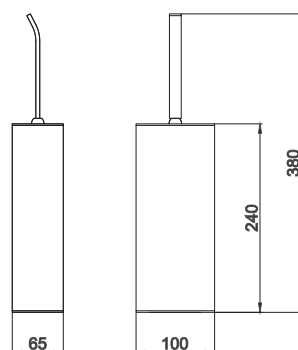
Hook in brass.

589.70.000 - Chrome



Toilet roll holder.

589.70.020 - Chrome



Free standing brass oval-shaped toilet brush holder.

589.70.050 - Chrome

* Special Order on request

Wolo

The WOLO Bathroom Mixer collection epitomizes the harmony, essentiality and elegance of sleek, streamlined designs. Whether incorporated on the edge of the bathtub, the shower wall, the washbasin or the floor, the WOLO collection always exudes an aerodynamic feel with absolute lightness.

WOLO Washbasin Mixer Series also gives you the option of installing a free-standing version beside your washbasin.

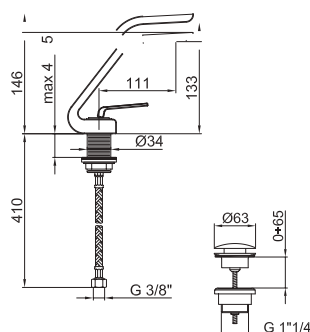








WOLO

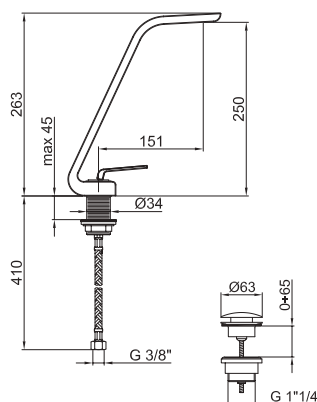


Single lever washbasin mixer with up & down pop-up waste, with 3/8" F flex. hoses cm 37.

589.65.030 - Chrome

589.65.270 - Matt white chrome

589.65.300 - Matt Black chrome

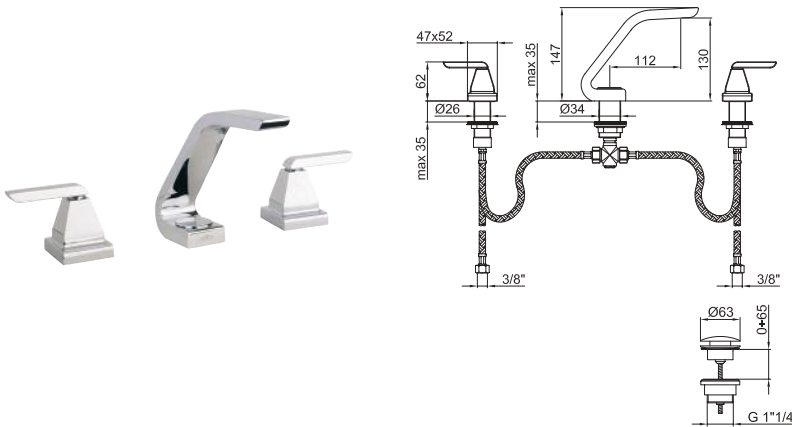


High single lever washbasin mixer with up & down pop-up waste, with flex. hose 37 cm.

589.65.031 - Chrome

589.65.271 - Matt white chrome

589.65.301 - Matt Black chrome

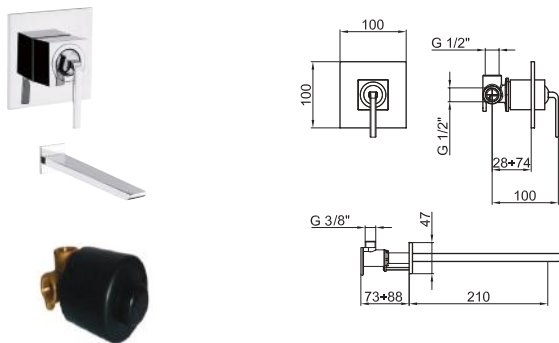


3-holes washbasin mixer with pop-up waste up & down.

589.65.038 - Chrome

589.65.278 - Matt white chrome

589.65.308 - Matt Black chrome



External part for concealed single lever washbasin mixer with Spout

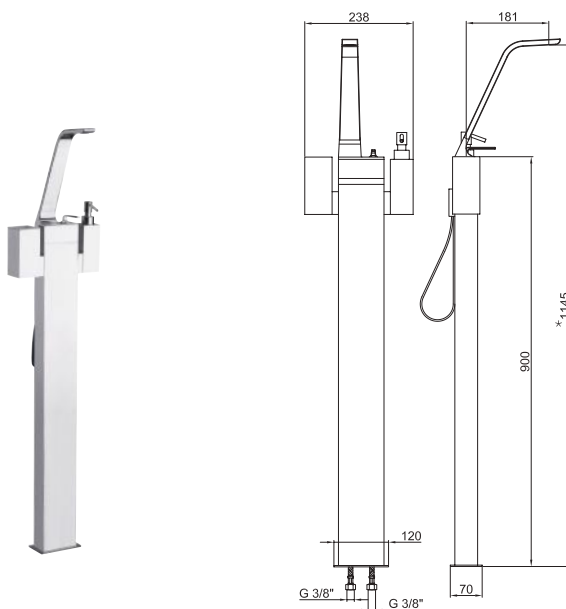
589.65.485 - Chrome

589.65.515 - Matt white chrome

589.65.545 - Matt Black chrome

Concealed part of single lever washbasin mixer and shower mixer

589.65.056 - Chrome



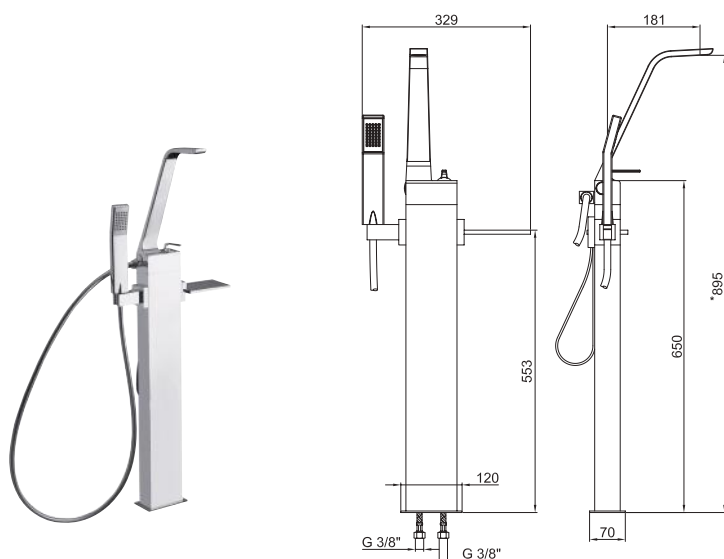
Single lever floor basin mixer with tumbler holder and soap dispenser.

589.65.039 - Chrome

589.65.279 - Matt white chrome

589.65.309 - Matt Black chrome

- Special sizes on request

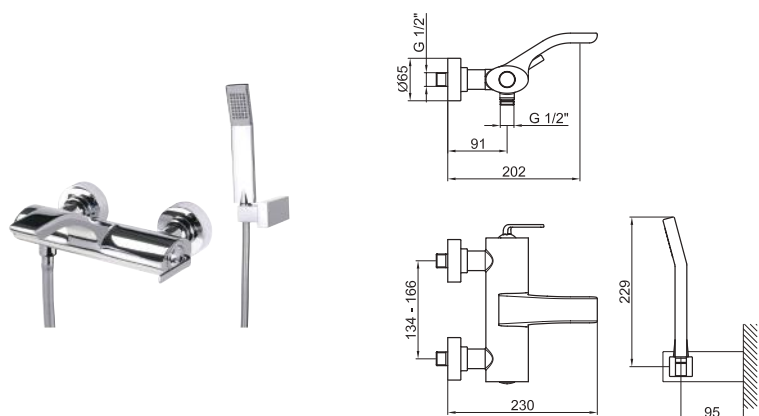


Single lever floor bath mixer with flexible hose, handshower and soap holder.

589.65.040 - Chrome

589.65.280 - Matt white chrome

589.65.310 - Matt Black chrome

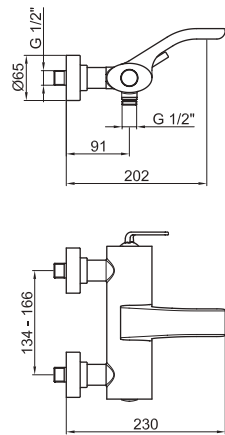


Single lever bath mixer with shower set complete of hose (150 cm), handshower and holder.

589.65.041 - Chrome

589.65.281 - Matt white chrome

589.65.311 - Matt Black chrome

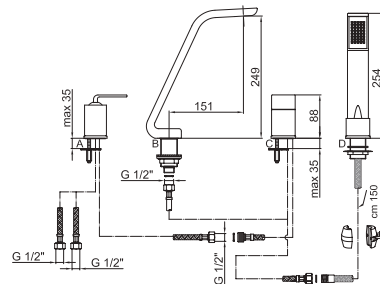


Single lever bath mixer without shower set.

589.65.042 - Chrome

589.65.282 - Matt white chrome

589.65.312 - Matt Black chrome

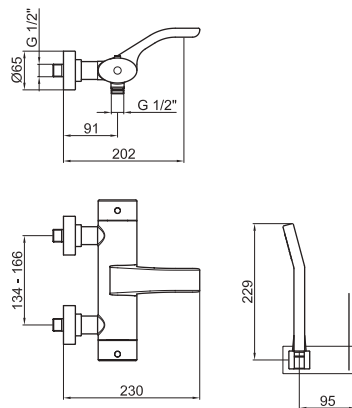


4-holes deck mounted bath mixer complete of hose (150 cm) and handshower.

589.65.043 - Chrome

589.65.283 - Matt white chrome

589.65.313 - Matt Black chrome

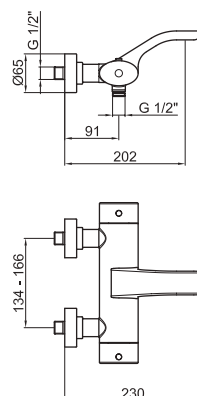


Thermostatic bath mixer with shower set.

589.65.044 - Chrome

589.65.284 - Matt white chrome

589.65.314 - Matt Black chrome

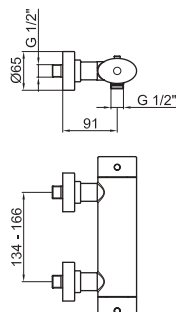


Thermostatic bath mixer without shower set.

589.65.045 - Chrome

589.65.285 - Matt white chrome

589.65.315 - Matt Black chrome

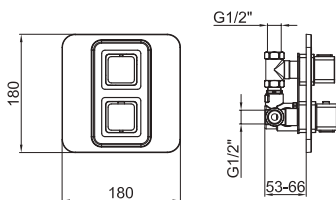


Thermostatic shower mixer without shower set.

589.65.046 - Chrome

589.65.286 - Matt white chrome

589.65.316 - Matt Black chrome



External part pf thermostatic shower mixer (1 - way)

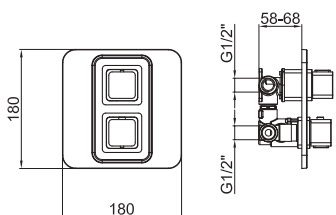
589.65.482 - Chrome

589.65.512 - Matt white chrome

589.65.542 - Matt Black chrome

Concealed part of thermostatic shower mixer
(1 - way)

589.65.481



External part of thermostatic shoower mixer
(2 - way) diverter without shower set

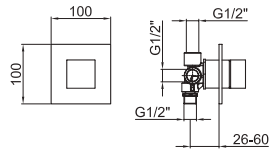
589.65.484 - Chrome

589.65.514 - Matt white chrome

589.65.544 - Matt Black chrome

Concealed part of thermostatic shower mixer
(2 - way)

589.65.483



External part of (3 - way) diverter

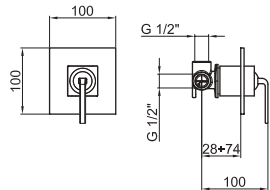
589.65.480 - Chrome

589.65.510 - Matt white chrome

589.65.540 - Matt Black chrome

Concealed part of (3 - way) diverter

589.65.059



External part for concealed single lever shower mixer

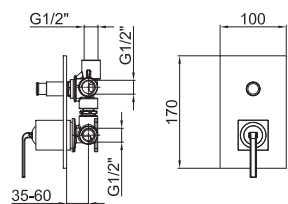
589.65.055 - Chrome

589.65.295 - Matt white chrome

589.65.355 - Matt Black chrome

Concealed part of single lever shower mixer

589.65.056



External part for concealed single lever bath/shower mixer with diverter

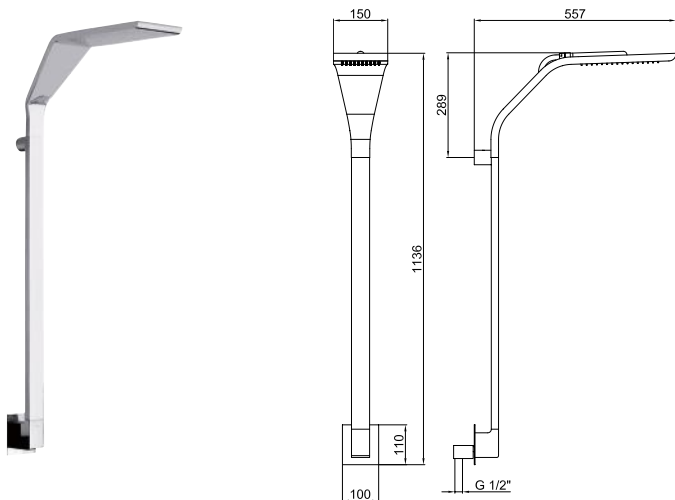
589.65.058 - Chrome

589.65.298 - Matt white chrome

589.65.358 - Matt Black chrome

Concealed part of single lever bath/shower mixer with diverter

589.65.057

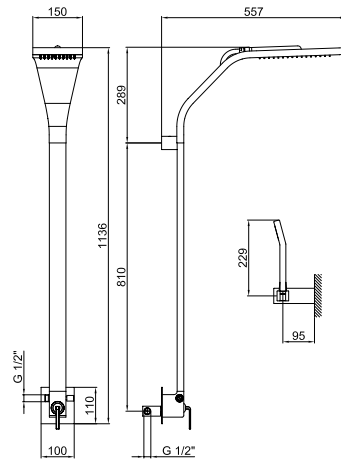


External column shower with antiscall
showerhead.

589.65.048 - Chrome

589.65.288 - Matt white chrome

589.65.318 - Matt Black chrome

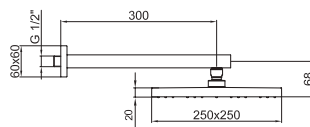


External column with shower mixer, diverter, flexible hose, holder, handshower and antiscale showerhead.

589.65.049 - Chrome

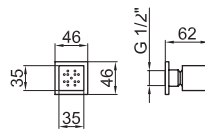
589.65.289 - Matt white chrome

589.65.319 - Matt Black chrome



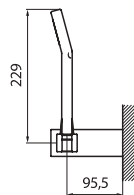
Shower arm with ball joint and ABS shower head.

589.65.036 - Chrome



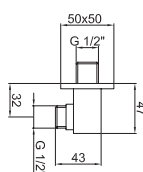
Lateral squared body jet with 6 liters/min flow rate.

589.65.053 - Chrome



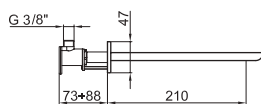
Shower set composed of holder, monospray handshower and flex hose.

589.65.035 - Chrome



Wall elbow 1/2" M connection.

589.65.054 - Chrome

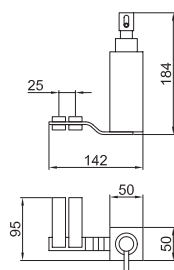


Spout for concealed bath mixer.

589.65.034 - Chrome

589.65.274 - Matt white chrome

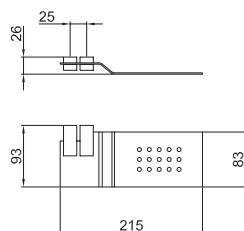
589.65.304 - Matt Black chrome



Brass soap dispenser.

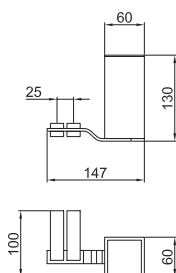
580.70.231 - Chrome

* Special Order on request



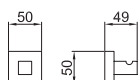
Standing soap holder in brass.

580.70.230 - Chrome



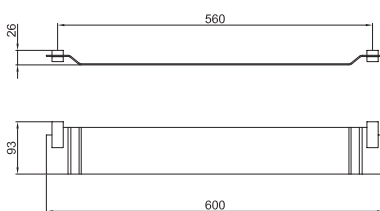
Tumbler holder in brass.

580.70.240 - Chrome



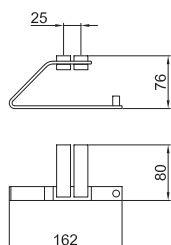
Hook in brass.

580.70.200 - Chrome



Shelf in brass.

580.70.260 - Chrome



Toilet roll holder.

580.70.220 - Chrome

* Special Order on request





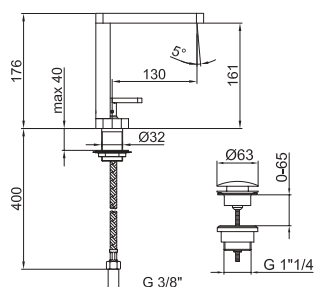
Living

The LIVING Bathroom Mixer collection is defined by straight lines and a contemporary design. By using a pick out of the LIVING series, you can design your bathroom space according to your personal needs. You could mount a LIVING Mixer on your washbasin, bathtub or shower wall and experience the same exuberance of style.





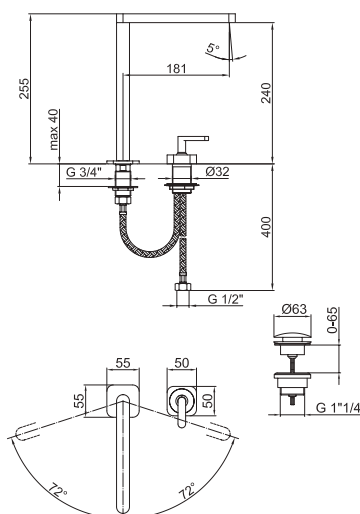
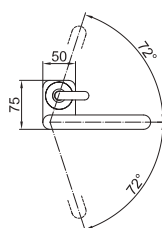
LIVING



Single lever washbasin mixer with up & down pop-up waste, with 3/8" F flex. hoses (37 cm).

589.65.120 - Chrome

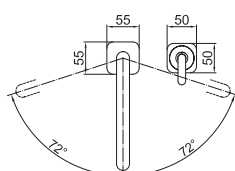
589.65.420 - Stainless Steel

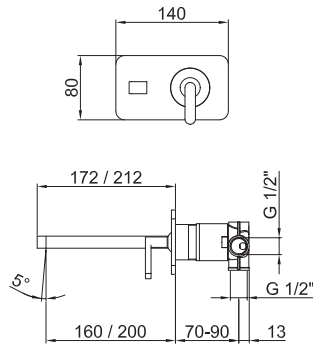


High single lever washbasin mixer with up & down pop-up waste, with 1/2" flex. hoses (37 cm).

589.65.121 - Chrome

589.65.421 - Stainless Steel





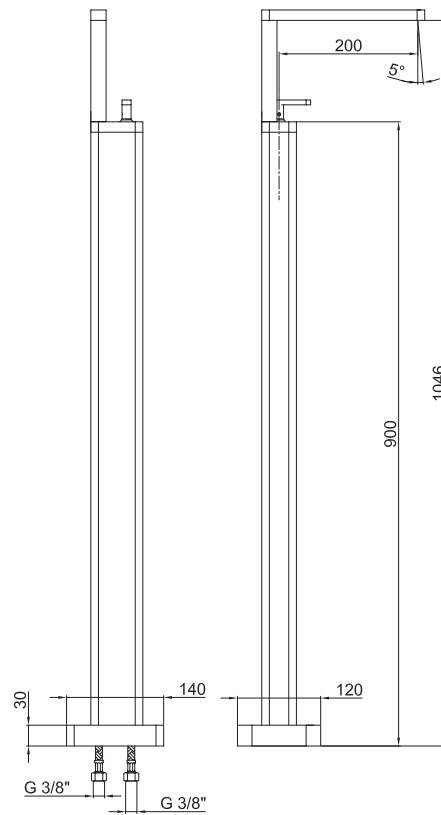
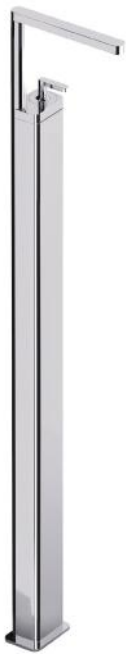
External part of washbasin mixer with 160 mm spout chrome

589.65.141 - Chrome

589.65.441 - Stainless Steel

Concealed part of washbasin mixer

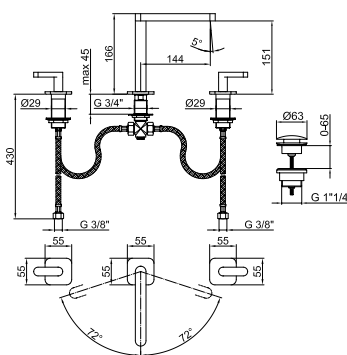
589.65.142



Single lever floor mounted basin mixer.

589.65.126 - Chrome

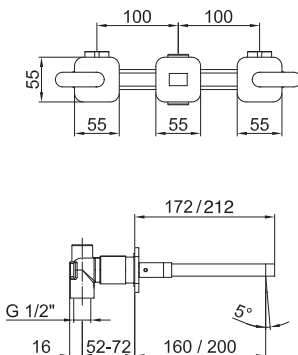
589.65.426 - Stainless Steel



3-holes washbasin mixer swivel spout with pop-up waste up & down.

589.65.127 - Chrome

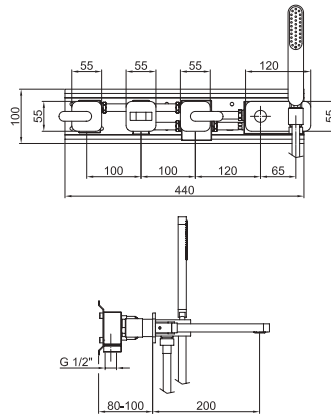
589.65.427 - Stainless Steel



Concealed 3-holes washbasin mixer.

589.65.128 - Chrome

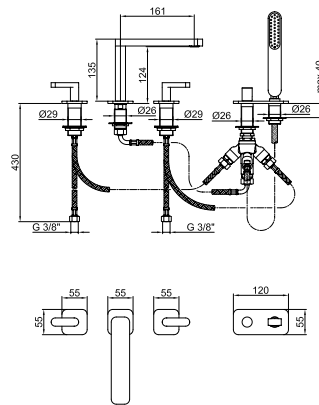
589.65.428 - Stainless Steel



Concealed bath mixer with spout, diverter, flex. hose and monospray handshower.

589.65.129 - Chrome

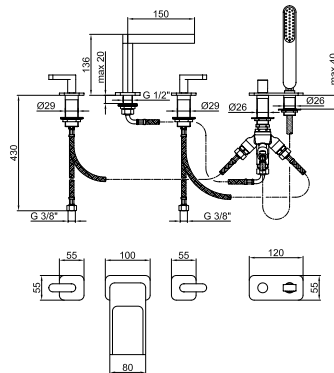
589.65.429 - Stainless Steel



5-holes deck mounted bath mixer complete of hose (200 cm) and handshower.

589.65.130 - Chrome

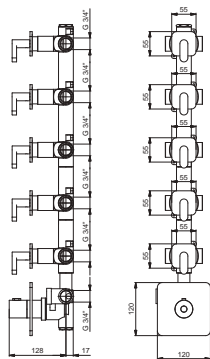
589.65.430 - Stainless Steel



5-holes deck mounted bath mixer complete of hose (200 cm), handshower and cascade spout.

589.65.131 - Chrome

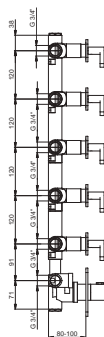
589.65.431 - Stainless Steel



External thermostatic shower mixer with
(5 -way) diverter

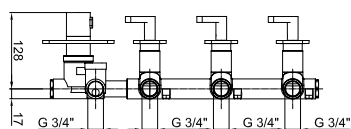
589.65.575 - Chrome

589.65.605 - Stainless Steel



Concealed thermostatic shower mixer with
(5 - way) diverter

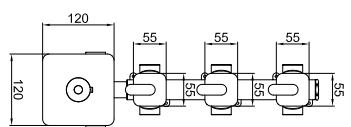
589.65.576



External thermostatic shower mixer with
(3 - 6 way) diverter

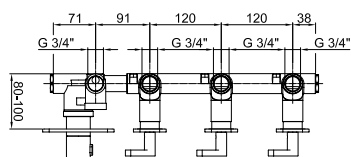
589.65.144 - Chrome

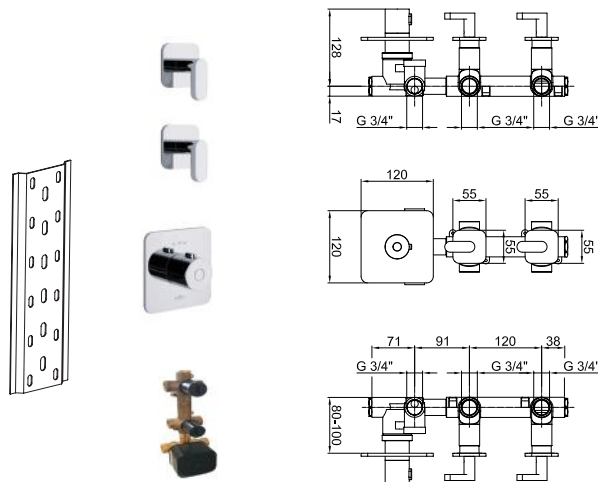
589.65.444 - Stainless Steel



Concealed thermostatic shower mixer with
(3 - 6 way) diverter

589.65.143





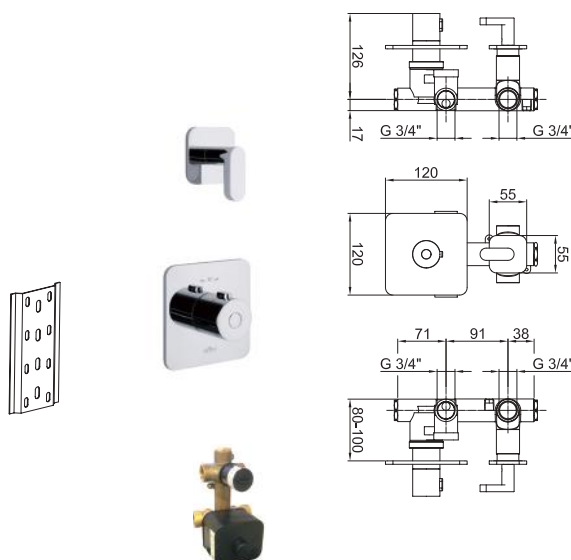
External part of thermostatic concealed high flow-rate mixer with (2 - 4 way) diverter.

589.65.573 - Chrome

589.65.603 - Stainless Steel

Concealed part of shower/bath mixer with diverter

589.65.572



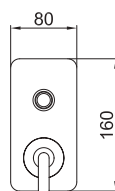
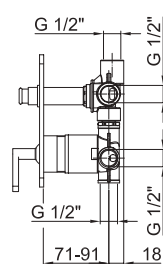
Thermostatic concealed high flow-rate mixer with (1 - 2 way) diverter.

589.65.571 - Chrome

589.65.601 - Stainless Steel

Concealed part of shower/bath mixer with diverter

589.65.570



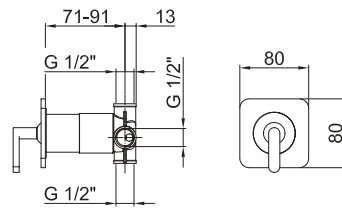
External part of shower/bath mixer with diverter
chrome

589.65.145 - Chrome

589.65.445 - Stainless Steel

Concealed part of shower/bath mixer with diverter

589.65.146



External part of shower mixer

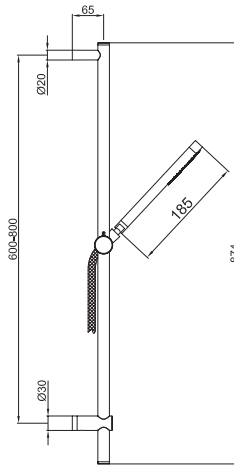
589.65.147 - Chrome

589.65.447 - Stainless Steel



Concealed part of shower mixer

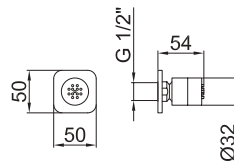
589.65.148



Brass sliding rail, with monospray handshower.

589.65.136 - Chrome

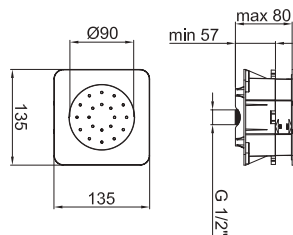
589.65.436 - Stainless Steel



Lateral cylindrical body jet with square plate.

589.65.137 - Chrome

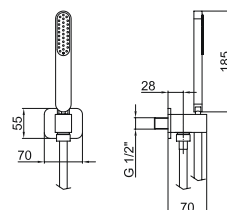
589.65.437 - Stainless Steel



Lateral square wall mounted body jet .

589.65.574 - Chrome

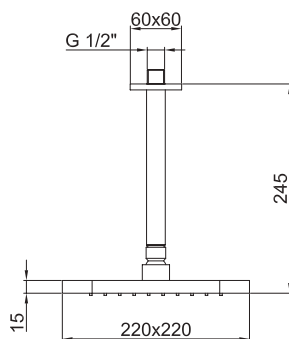
589.65.604 - Stainless Steel



Complete set of Hand shower with hose & hook .

589.65.125 - Chrome

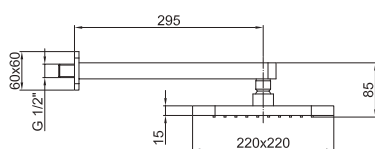
589.65.425 - Stainless Steel



Square fixed showerhead with ceiling arm.

589.65.138 - Chrome

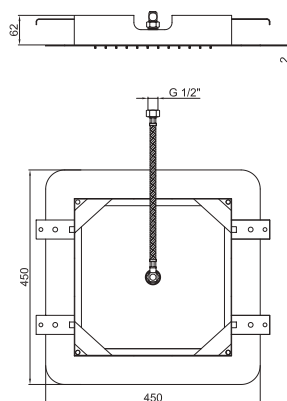
589.65.438 - Stainless Steel



Shower head with arm.

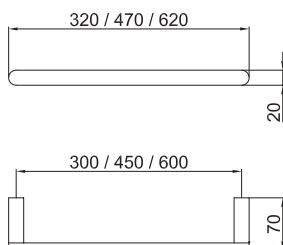
589.65.124 - Chrome

589.65.424 - Stainless Steel



Shiny stainless steel antiscaling showerhead with 1/2\"

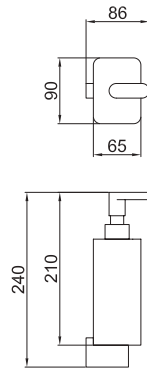
589.65.440 - Shiny Steel



Brass towel holder

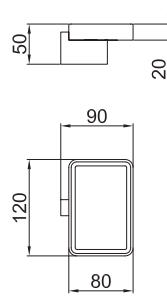
580.70.410 - Chrome

* Special Order on request



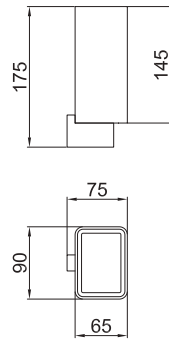
Wall mounted ceramic liquid soap dispenser.

580.70.433 - Chrome



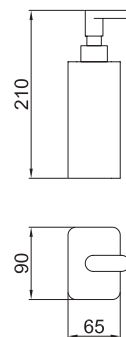
Wall mounted ceramic soap dish.

580.70.431 - Chrome



Wall mounted ceramic tumbler.

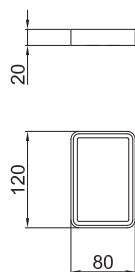
580.70.441 - Chrome



Ceramic liquid soap dispenser.

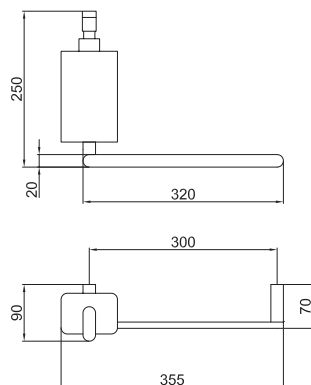
580.70.432 - Chrome

* Special Order on request



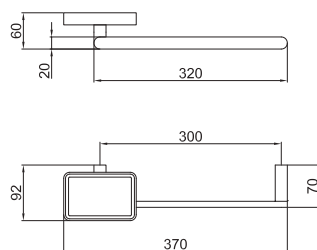
Ceramic soap dish.

580.70.430 - Chrome



Wall mounted ceramic liquid soap dispenser with towel holder.

580.70.439 - Chrome



Wall mounted ceramic soap dish with towel holder.

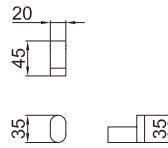
580.70.438 - Chrome



Toilet roll holder.

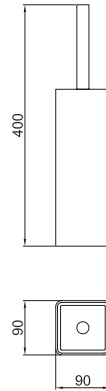
580.70.420 - Chrome

* Special Order on request



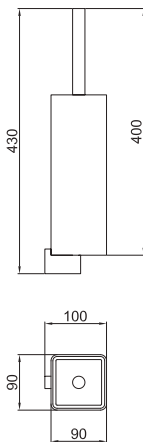
Hook in brass.

580.70.400 - Chrome



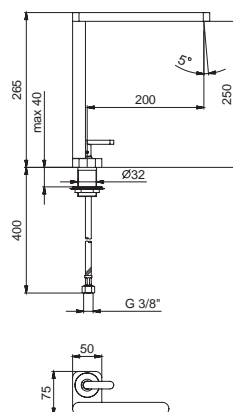
Free standing toilet brush holder.

580.70.450 - Chrome



Wall mounted toilet brush holder.

580.70.451 - Chrome



Single lever sink mixer swivel spout, with 3/8" F flex. hoses (37 cm).

589.65.140 - Chrome

* Special Order on request

Flauto

Elegant and personal; unusual and modern -the large spout, the decisive fold of the central body and the handle infuse the widespread bathtub filler with polished elegance which is accentuated by the slender hand shower. With FLAUTO, bathrooms are now a place where music and water play together in perfect harmony.

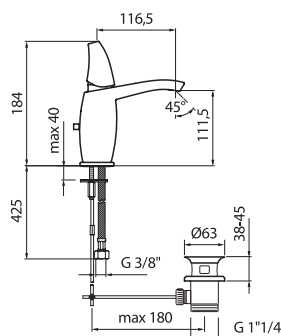








FLAUTO

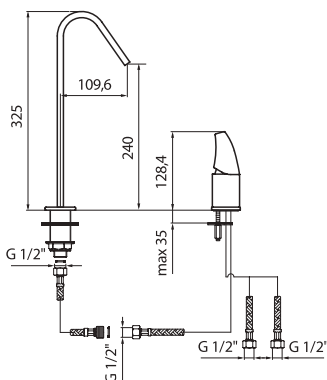


Single lever washbasin and bidet mixer with 1"1/4 pop-up waste and 3/8" F flex. hoses (50 cm).

589.65.090 - Chrome

589.65.360 - Satin Handle

589.65.390 - Black Handle

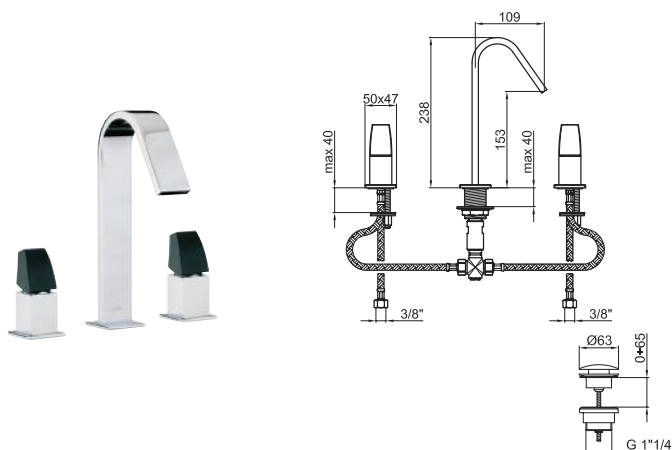


Concealed single lever washbasin mixer, without pop-up waste and 1/2" flex hoses.

589.65.091 - Chrome

589.65.361 - Satin Handle

589.65.391 - Black Handle

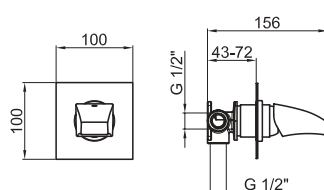


3-holes washbasin mixer with pop-up up & down waste.

589.65.105 - Chrome

589.65.375 - Satin Handle

589.65.405 - Black Handle

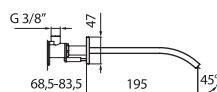


External part of single lever washbasin mixer with Spout

589.65.110 - Chrome

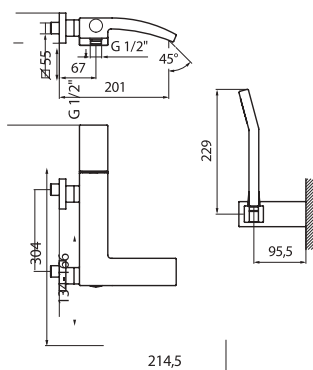
589.65.380 - Satin Handle

589.65.410 - Black Handle



Concealed part of single lever shower mixer and washbasin mixer

589.65.106

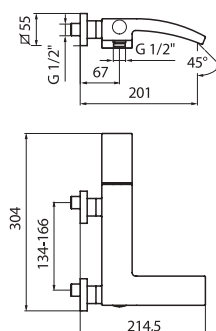


Single lever bath mixer with shower set complete of hose (150 cm), handshower and holder.

589.65.097 - Chrome

589.65.367 - Satin Handle

589.65.397 - Black Handle

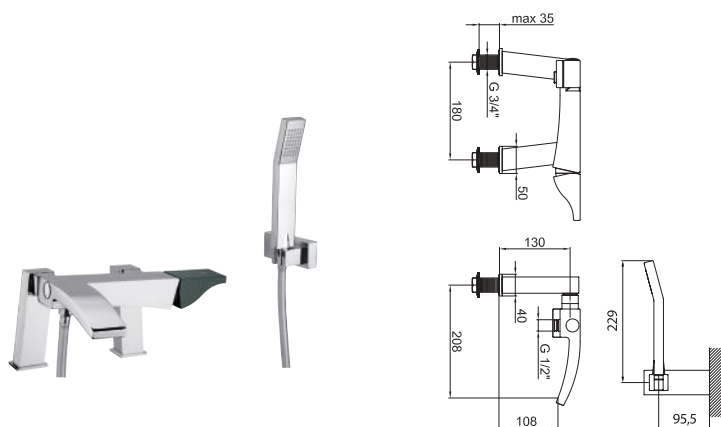


Single lever bath mixer without shower set.

589.65.098 - Chrome

589.65.368 - Satin Handle

589.65.398 - Black Handle

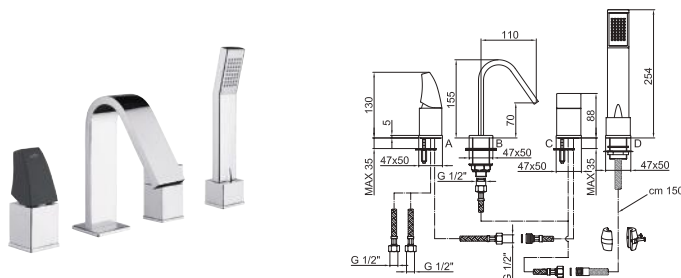


Single lever bath mixer, with pillar legs, shower set complete of hose (150 cm), handshower and holder.

589.65.099 - Chrome

589.65.369 - Satin Handle

589.65.399 - Black Handle

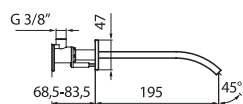


4-holes deck mounted bath mixer complete of hose (150 cm) and handshower.

589.65.100 - Chrome

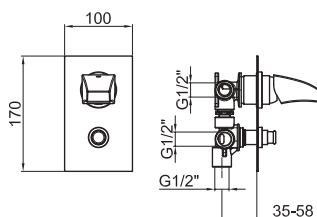
589.65.370 - Satin Handle

589.65.400 - Black Handle



Spout for concealed bath mixer.

589.65.095 - Chrome



External part for concealed bath/shower mixer with diverter

589.65.109 - Chrome

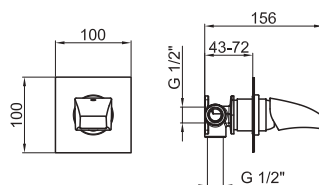
589.65.379 - Satin Handle

589.65.409 - Black Handle



Concealed part of bath/shower mixer with diverter

589.65.108



External part of single lever shower mixer

589.65.107 - Chrome

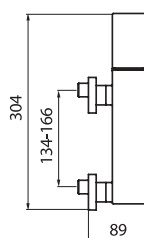
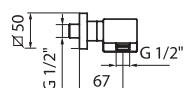
589.65.377 - Satin Handle

589.65.407 - Black Handle



Concealed part of single lever shower mixer and washbasin mixer

589.65.106

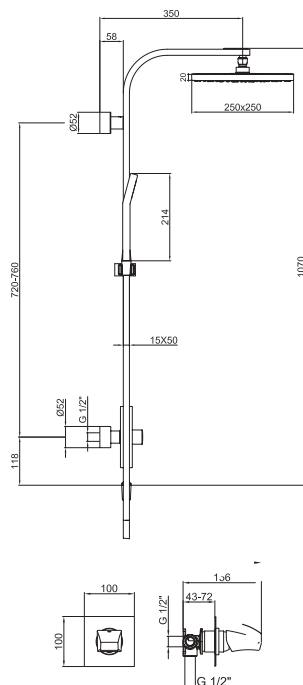


Single lever shower mixer without shower set.

589.65.102 - Chrome

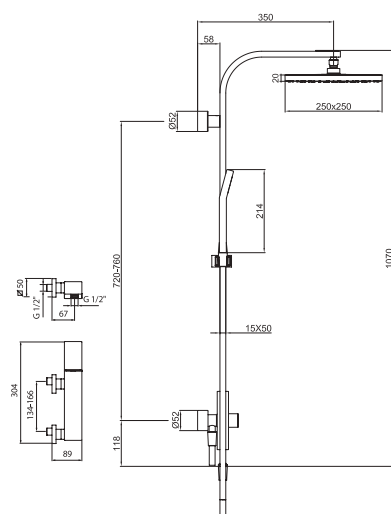
589.65.372 - Satin Handle

589.65.402 - Black Handle



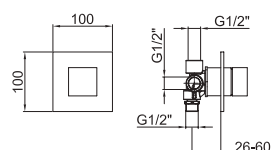
Concealed shower mixer with column, shower head and monospray handshower.

589.65.103 - Chrome



Shower mixer with column, shower head and monospray handshower.

589.65.104 - Chrome



External part of (3 - way) diverter

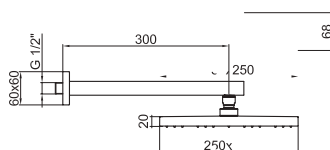
589.65.480 - Chrome

589.65.381 - Satin Handle

589.65.411 - Black Handle

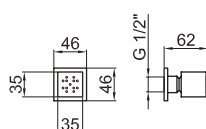
Concealed part of (3 - way) diverter

589.65.059



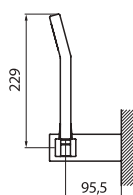
Shower arm with ball joint and PVC shower head.

589.65.036 - Chrome



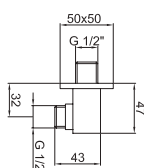
Lateral squared body jet with 6 liter/min flow rate.

589.65.053 - Chrome



Shower set composed of holder, monospray handshower and flex hose.

589.65.035 - Chrome



Wall elbow 1/2" M connection.

589.65.054 - Chrome

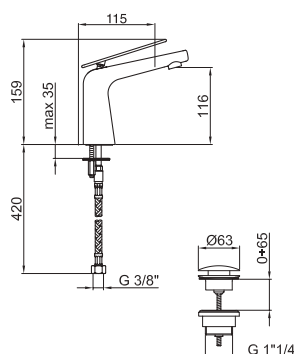


Loth₂O

Conical lines, a tapered body with a forward tilt and a delicate lever as fine as a petal. Inspired by a flower, both in name and shape, the LOTH2O collection symbolizes purity and strength. With LOTH2O, every movement becomes fluid, simple and imperceptibly light.



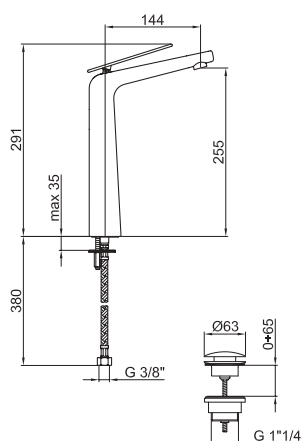
LOTH₂O



Single lever washbasin mixer with up & down pop-up waste, with 3/8" F flex. hoses (37 cm).

589.65.060 - Chrome

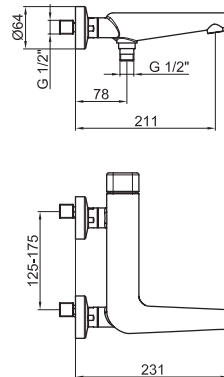
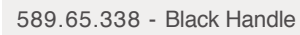
589.65.330 - Black Handle



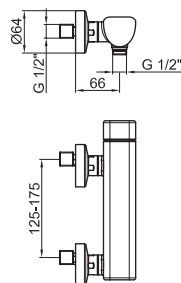
High single lever washbasin mixer with up & down pop-up waste, with 3/8" flex hoses (37 cm).

589.65.061 - Chrome

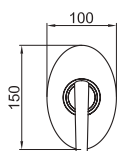
589.65.331 - Black Handle



589.65.340 - Black Handle



589.65.341 - Black Handle



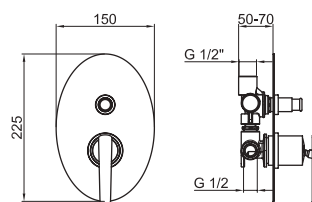
External part for concealed single lever shower mixer

589.65.074 - Chrome

589.65.344 - Chrome with Black Handle

Concealed part for single lever shower mixer, with ceramic cartridge, with waterproof membrane

589.65.063



External part for concealed single lever bath/shower mixer with diverter chrome

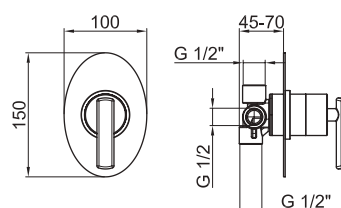
589.65.076 - Chrome

589.65.346 - Black Handle



Concealed part of bath/shower mixer with diverter

589.65.075



External part of (3 - way) diverter

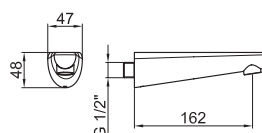
589.65.077 - Chrome

589.65.347 - Black Handle



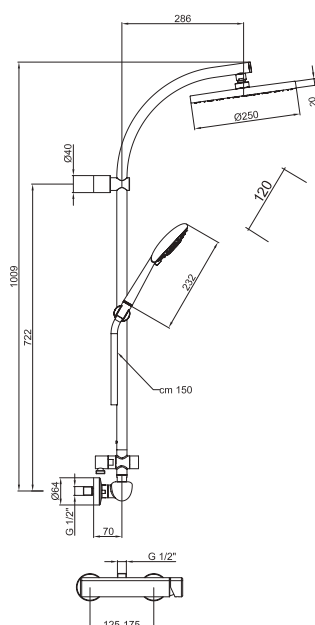
Concealed part of (3 - way) diverter

589.65.023



Spout for concealed bath mixer, 1/2" connection.

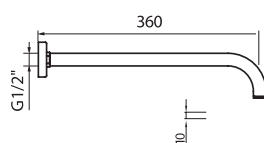
589.65.006 - Chrome



Shower mixer with column, shower head and multifunction handshower.

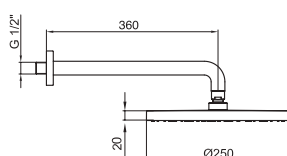
589.65.073 - Chrome





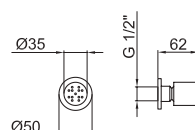
Shower arm with ball joint and ABS shower head.

589.65.066 - Chrome



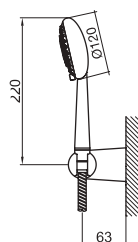
Shower arm with ball joint and ABS shower head.

589.65.009 - Chrome



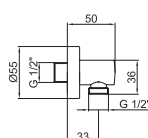
Lateral cylindrical body jet with 6 litre /min flow rate.

589.65.019 - Chrome



Shower set composed of holder, multifunction handshower and flex hose.

589.65.065 - Chrome



Wall elbow 1/2" M connection.

589.65.011 - Chrome

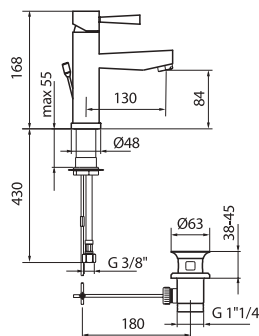
Conic

CONIC: is like a natural spring, a breeze or breath of fresh air. The Conic collection features an essential style created by in depth research into how we have used and controlled water through the ages. This is why Conic and its timeless style naturally fit in with any type of bathroom or interior design Linear or curved, on a wall or a washbasin, Conic encompasses incredible functionality and removes any barriers between the purity of the water and the surrounding ambience.



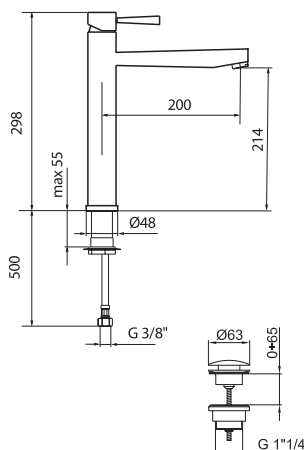


CONIC



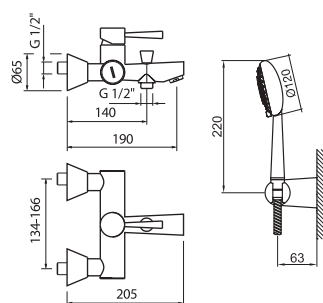
Single lever washbasin mixer with 1"1/4 pop-up waste and 3/8" F flex. hoses (50 cm).

589.65.150 - Chrome



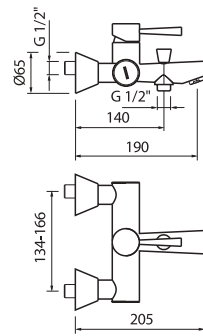
High single lever washbasin mixer with up & down pop-up waste, with 3/8" flex. hoses (70 cm).

589.65.151 - Chrome



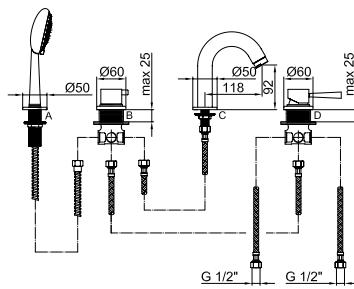
Single lever bath mixer with shower set complete of brass hose (150 cm), handshower and holder.

589.65.154 - Chrome



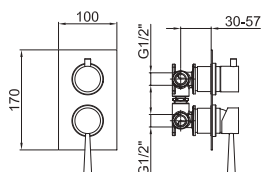
Single lever bath mixer without shower set.

589.65.155 - Chrome



4-holes deck mounted bath mixer complete of brass hose (150 cm) and handshower.

589.65.157 - Chrome



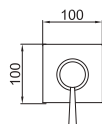
External part for concealed single lever bath/shower mixer with diverter

589.65.169 - Chrome



Concealed part of bath/shower mixer with diverter

589.65.168



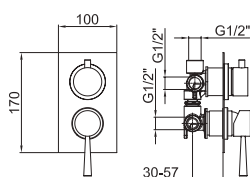
External part for concealed single lever shower mixer

589.65.162 - Chrome



Concealed part of the single lever shower mixer

589.65.167



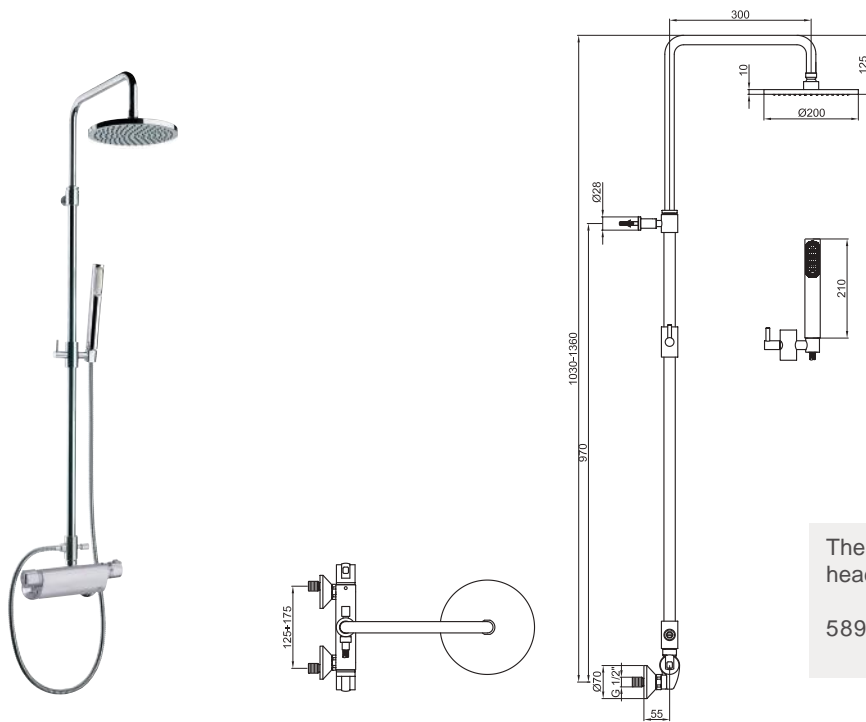
External part for Concealed single lever shower mixer, with (3 - way) diverter.

589.65.171 - Chrome

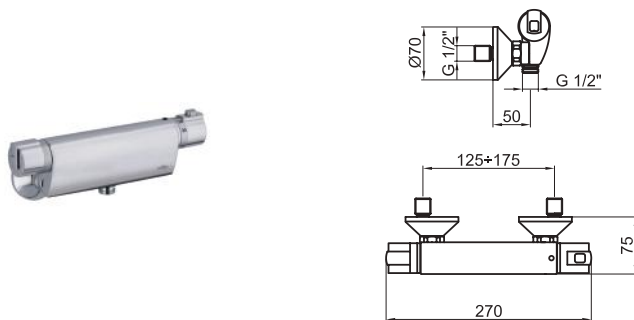


Concealed part of bath/shower mixer with diverter

589.65.170



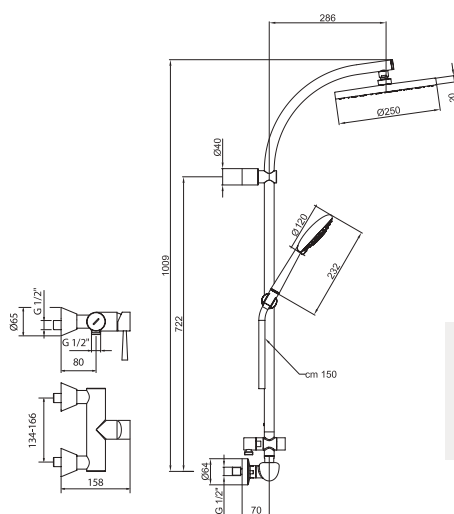
Thermostatic shower mixer with column, shower head and monospray handshower.
 589.65.159 - Chrome



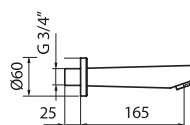
Thermostatic shower mixer without shower set.
 589.65.156 - Chrome



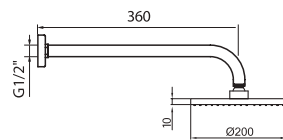
Single lever shower mixer without shower set.
 589.65.160 - Chrome



589.65.163 - Chrome

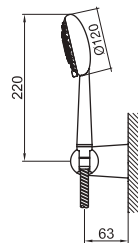


589.65.164 - Chrome



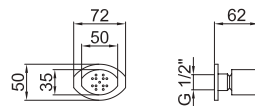
Shower arm with ball joint and PVC shower head.

589.65.066 - Chrome



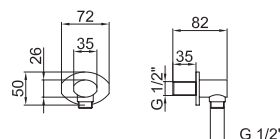
Shower set composed of holder, multifunction handshower and flex hose.

589.65.065 - Chrome



Lateral elliptic body jet with 6 liters /min flow rate.

589.65.166 - Chrome



Wall elbow 1/2" M connection.

589.65.165 - Chrome



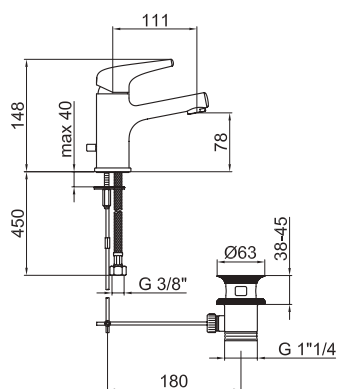


Rivolti

Although Rivolti has a soft curve inspired by traditional Japanese ceremonial dresses or an exquisite teapot, the collection prefers not to be seen as too formal. It prefers to naturally incorporate its innate simplicity in a design unblemished by the passing of time. Fluid, bold, dynamic: Rivolti fixtures and fittings influence the entire bathroom, expressing an idea of modernity that blends elegantly regardless of the latest trends.

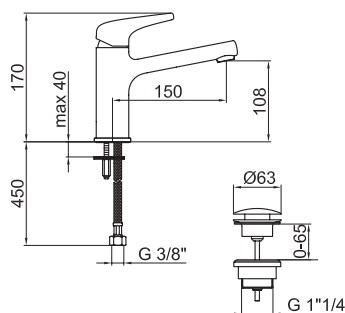


RIVOLI



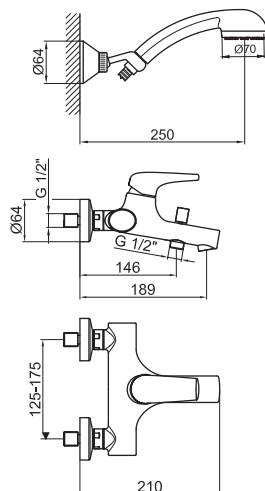
Single lever washbasin mixer with 1"1/4 pop-up waste and 3/8" F flex. hoses (50 cm).

589.65.180 - Chrome



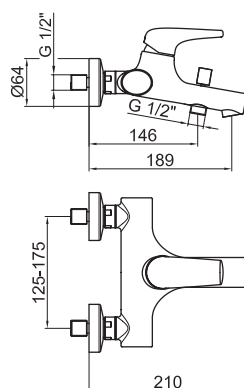
High single lever washbasin mixer long spout with up & down pop-up waste, with flex. hose (50 cm).

589.65.181 - Chrome



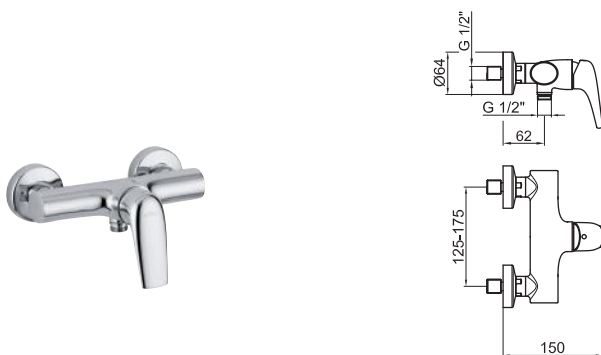
Single lever bath mixer with shower set complete of brass hose (150 cm), handshower and holder.

589.65.182 - Chrome



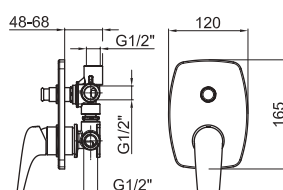
Single lever bath mixer without shower set.

589.65.183 - Chrome



Single lever shower mixer without shower set.

589.65.184 - Chrome



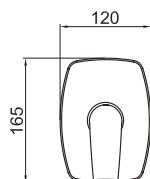
External part of single lever bath mixer with automatic diverter, without shower set.

589.65.194 - Chrome



Concealed single lever bath mixer with automatic diverter, without shower set.

589.65.193



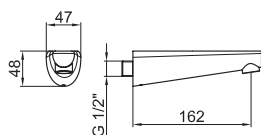
External part for single lever shower mixer.

589.65.187 - Chrome



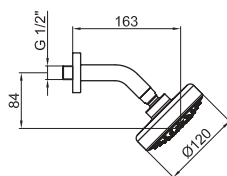
Concealed part of shower mixer cartridge Ø 35

589.65.167



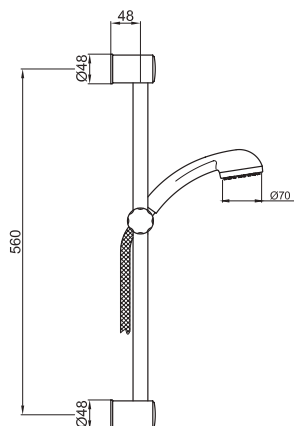
Spout for concealed bath mixer, 1/2" connection.

589.65.006 - Chrome



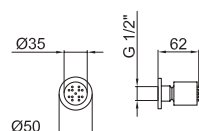
Shower arm with ball joint and PVC shower head.

589.65.214 -Chrome



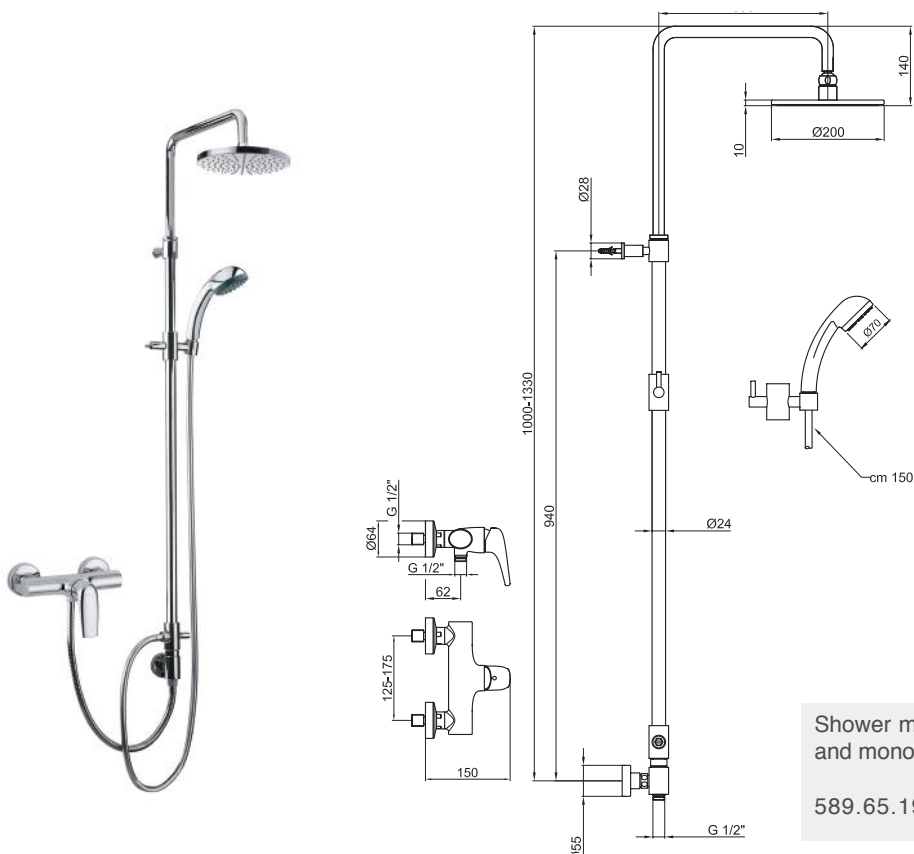
Brass sliding rail with monospray handshower.

589.65.191 -Chrome



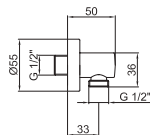
Lateral cylindrical body jet with 6 liters /min flow rate.

589.65.019 -Chrome



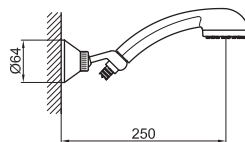
Shower mixer with shower column, shower head and monospray handshower.

589.65.192 - Chrome



Wall elbow 1/2" M connection.

589.65.011 - Chrome



Shower set composed of holder, monospray handshower and flex hose.

589.65.190 - Chrome



Bathroom

PAGE

106 - 133

114	KUBO
116	SALVAGENTE
118	ORBITA
120	TIPO
122	TOXO
123	SOSO
124	Installation Guidelines

BATHROOM, THY NAME IS VIBRANCY

Kids attract vibrancy and colours; and we attract kids!

Your child is exposed to choices today. He already knows his favourite celebrity, cartoon icon, video game and most importantly, he knows his favourite colours. And she is opinionated enough to decide how her bedroom and bathroom should look and ensure that it has the splashes of her favourite colours. And can you challenge this? NO! And why should you – with our vibrant range of child-friendly washbasins, vanity units and accessories from Boing, Spain. You can give your children exactly what they want. With this, you need not worry about the adversities of sharp edges and hard materials harming your child; our washbasins are made of eco-friendly materials that are child-safe, flexible, soft and light. We want to make sure that designing your kids' bathroom is now 'child's play'!





Advantages:

Since 2003, the brand Bo!ng has proposed the creation of objects to make the bathroom a friendly, secure, comfortable and joyful environment. Today, with the building systems in construction and household cleaning products, we ensure hygienic and sanitary health care settings easily and safely. Our products are practical, resistant and durable, as well as flexible, soft, warm and fun. Enjoy!

SOFT, SECURE AND COMFORTABLE

The flexibility, the soft touch and the soft texture, makes this range pleasant and safe. It's resistant to easy breakage or damage thanks to its strong shock absorbing material.



SOFT AND FLEXIBLE -

Gives security: cushions blows and falls. Resistant to impacts and bending.



LIGHT -

Easy handling and installation. Saves energy on transport.



EASY ASSEMBLY -

Ideal for reforms and new buildings. Metallic structure, drain, screws and siphon are provided.



WATERPROOF

Made from flexible polyurethane, the washbasins can sustain harsh conditions. Its smooth, non-porous surface doesn't allow water to soak into the material.



HYGIENIC

The non-porous polyurethane surface repels dust and does not absorb humidity, avoiding the proliferation of mold and mildew.



RESISTENT TO TEMPERATURES & ROUGH HANDLING

The surfaces are highly resistant to water temperatures up to 70°C, water vapour, dry heat and the possible neglect of a burning cigarette.



DURABLE

This range is colorfast and resistant to harsh weather or UV rays - the inert material will not corrode or change its appearance or colour.



EASY TO CLEAN

No need for any specific maintenance; can be cleaned with basic cleaning agents as it is resistant to most chemical products used in domestic cleaning.



SUSTAINABLE

Inert material. Does not decompose into contaminant elements. Does not emit noxious gases into the atmosphere in its making and consumes little energy.



RECYCLICABLE

After its useful life the material can be used for the production of other products.

Quality Test

The washbasins of the **BOING** series have been tested in AIDIMA and the following conclusions have been made.
"The samples tested meet the requirements of the Internal Regulation AIDIMA for the right to use the symbol of Quality (SC)"

The following tests have been carried out:

- Resistance to cleaning products and other bathroom characteristics.
- Resistance to water vapor.
- Resistance to abrasion.
- Resistance to dry heat.
- Colour resistance to light
- UV radiation exposure
- Colour fastness to hot water
- Resistance to hot water
- Biological aging
- Determination of flammability
- Reaction to fire

Results:

- Resistant to cleaning products and other characteristics of the bathroom. With some products care must be taken in handling as a "slight change in brightness or colour only visible from certain angles of inspection" may be caused (Acetone Remover, Hydrochloric acid, dye, nail polish, polish).
- Resistance to abrasion.
- Water resistant to steam and hot water without degradation of gloss or colour. Solid colours remain in exposure to hot water.
- Determination of flammability. No ignition occurs with cigarettes or matches.
- Resistance to dry heat.
- Resistant to exposure to UV radiation and light-resistant colour.
- Biological aging = without deterioration or signs of rot.



Our products are approved and certified by AIDIMA.



AIDIMA
CERTIFICATE
OF QUALITY



WARRANTY

Boing extends a warranty for 10 years against faulty workmanship and manufacturing defect from the date of Invoice.

SOFT COLOURFUL WARM FUN

Colour plays a vitally important role in the world in which we live. Colour can sway thinking, change actions, and cause reactions. Colour can attract your attention or change your mood. It speaks to who you are, how you feel and where you're going. Colour is one of the first things you notice when you walk into a room. Häfele introduces for the first time in India, BOING – Wash Basins. Boing adds colours to your bathroom through its wide range, adapting to any environment and giving them, principally a huge dose of originality. BOING also believes in a concept of soft wash basins, to reduce accidents and avoid injuries. BOING is made of polyurethane which makes the wash basins striking, user friendly, flexible, soft and light.

BOING also insures safety against shocks by cushioning falls because it is made of a deformable material that takes away the hardness of surfaces. These washbasins are perfectly resistant to bleach, ammonia, liquid detergent or soap powder, sodium hydroxide, hydrogen peroxide, toothpaste etc. They are also resistant to high temperatures, water (up to 70° C), water vapor, dry heat and the possibility of forgetting a lit cigarette. The material, although flexible, is solid and does not absorb moisture which prevents the growth of mold or mildew. BOING products are hygienic, strong and durable because of their shapes and the characteristics of the materials they are made of, but must be treated well and taken care of. A perfect Way to add colour to life!



HYGIENIC, RESISTANT AND DURABLE

The surfaces and shapes of our washbasins are smooth and soft, to facilitate cleaning. The material is solid and has no surface porosity; it does not absorb dust and moisture, preventing mildew growth. We recommend cleaning with water, detergent and a cloth or sponge. The Boing surface resists the chemical products used in the cleaning and hygiene of our own homes.

It withstands a wide range of temperatures, steam and dry heat, from 70 ° C to -30 ° C. It won't break or deform, with blows and an unlikely accidental cut, does not alter the functionality resulting in a self-sealing flexibility. No colour is degraded by exposure to the elements.

COLOUR AND SYMPATHY

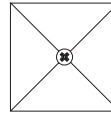
The products are available in different colours that stimulate vibrancy within your bathrooms. They are light, designed for easy assembly and installation with simple and conventional means. The manufacture of our products is environmentally friendly -they emit no pollutants or harmful gases making the surroundings safe for your children.

Available in five colours: WHITE, RED, ORANGE, PINK and BLUE

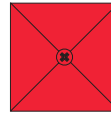
Information:

Description	Article No.
KUBO Square Polyurethane Washbasin	588.43.00 <u>X</u>
SALVAGENTE Round Polyurethane Washbasin	588.43.02 <u>X</u>
ORBITA Round Polyurethane Washbasin	588.43.04 <u>X</u>
TIPO Rectangular Polyurethane Washbasin	588.43.06 <u>X</u>
Casco Orbita + Soso	588.43.94 <u>X</u>
Casco Salvagente + Soso	588.43.92 <u>X</u>
Casco Tipo+ Soso	588.43.96 <u>X</u>
TOXO Towel Hanging Shelf Unit	580.72.00 <u>X</u>
SOSO 40 ENRASADA	580.72.09 <u>X</u>

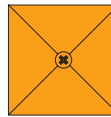
Replace X with



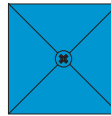
0 for **White**



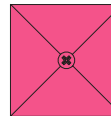
1 for **Red**



2 for **Orange**



3 for **Blue**



4 for **Pink**

CASCO: Aluminium furniture piece

SOSO: Polyurethane frame for CASCO

SOSO 40 ENRASADA: Mirror flush to polyurethane

The Boing products can be found in stock normally in a pallet range of basic colours: Stock colours.



White



Red



Orange



Blue



Pink

Boing products can be ordered in the colour that the client desires by indicating a RAL reference, Pantone or supplying a sample colour and negotiating the conditions, supply time and production cost.

KUBO





SALVAGENTE



CASCO SALVAGENTE + SOSO





CASCO ORBITA + SOSO



TIPO



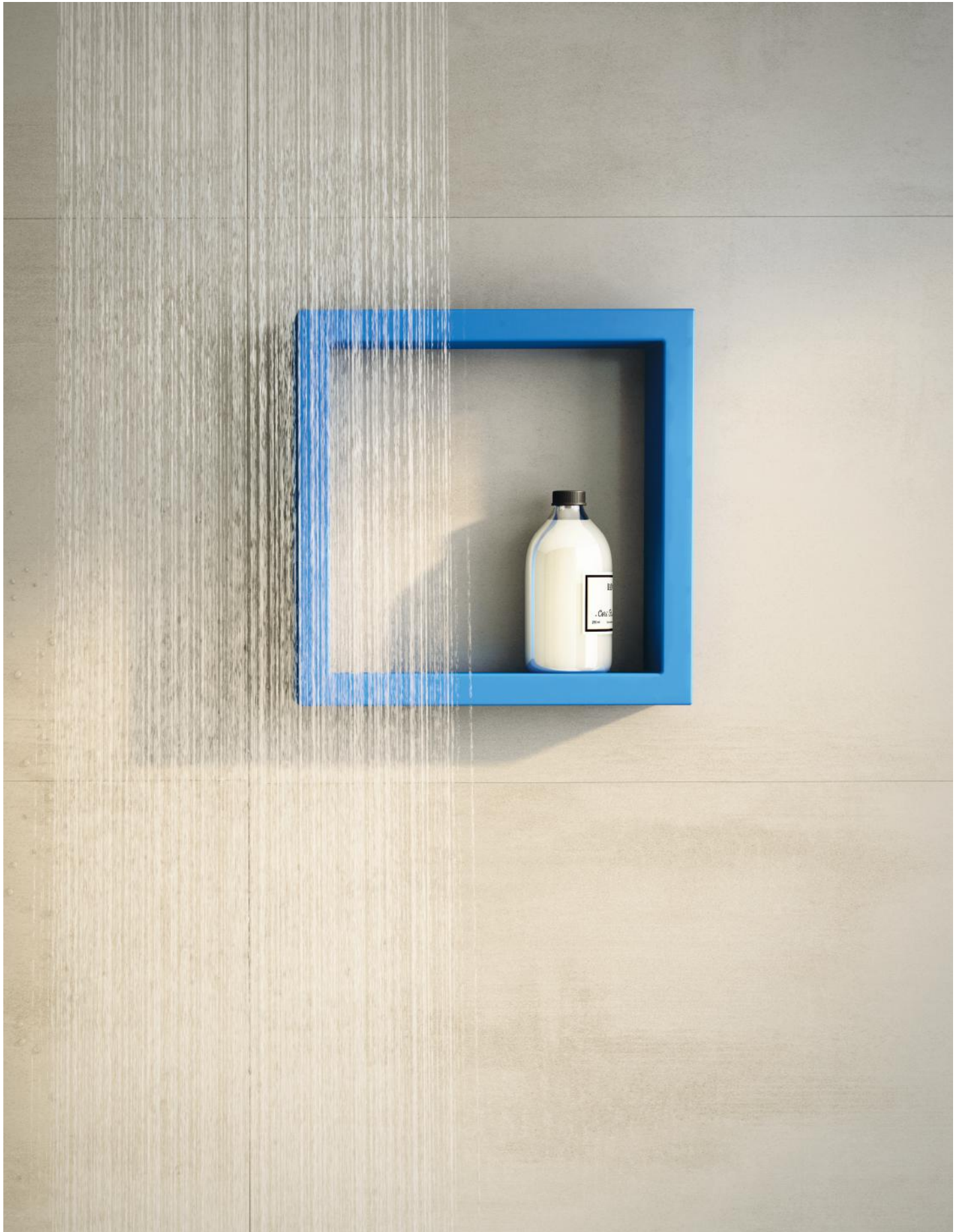
CASCO TIPO + SOSO

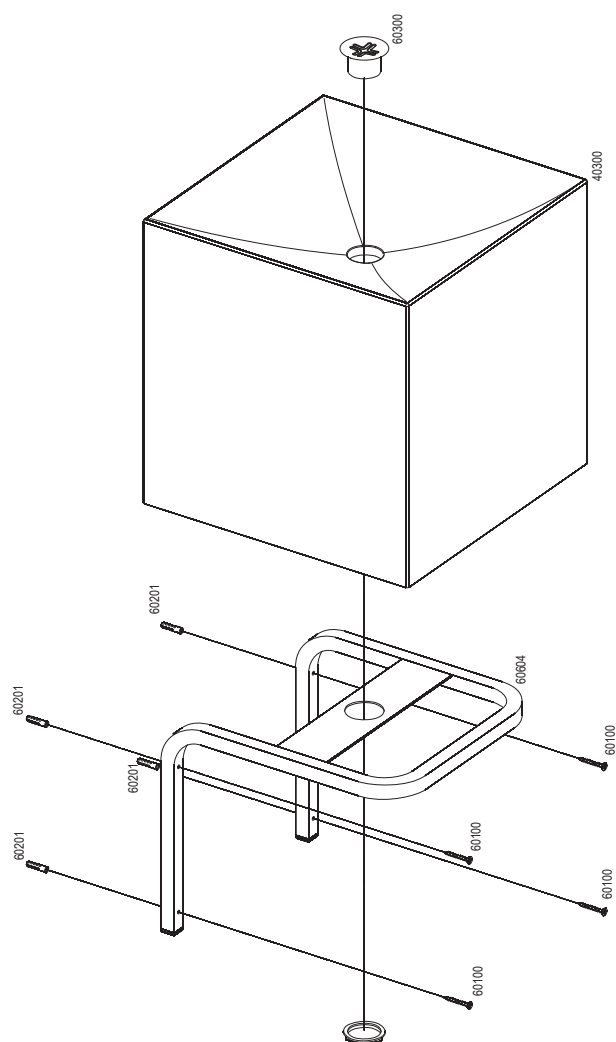


TOXO

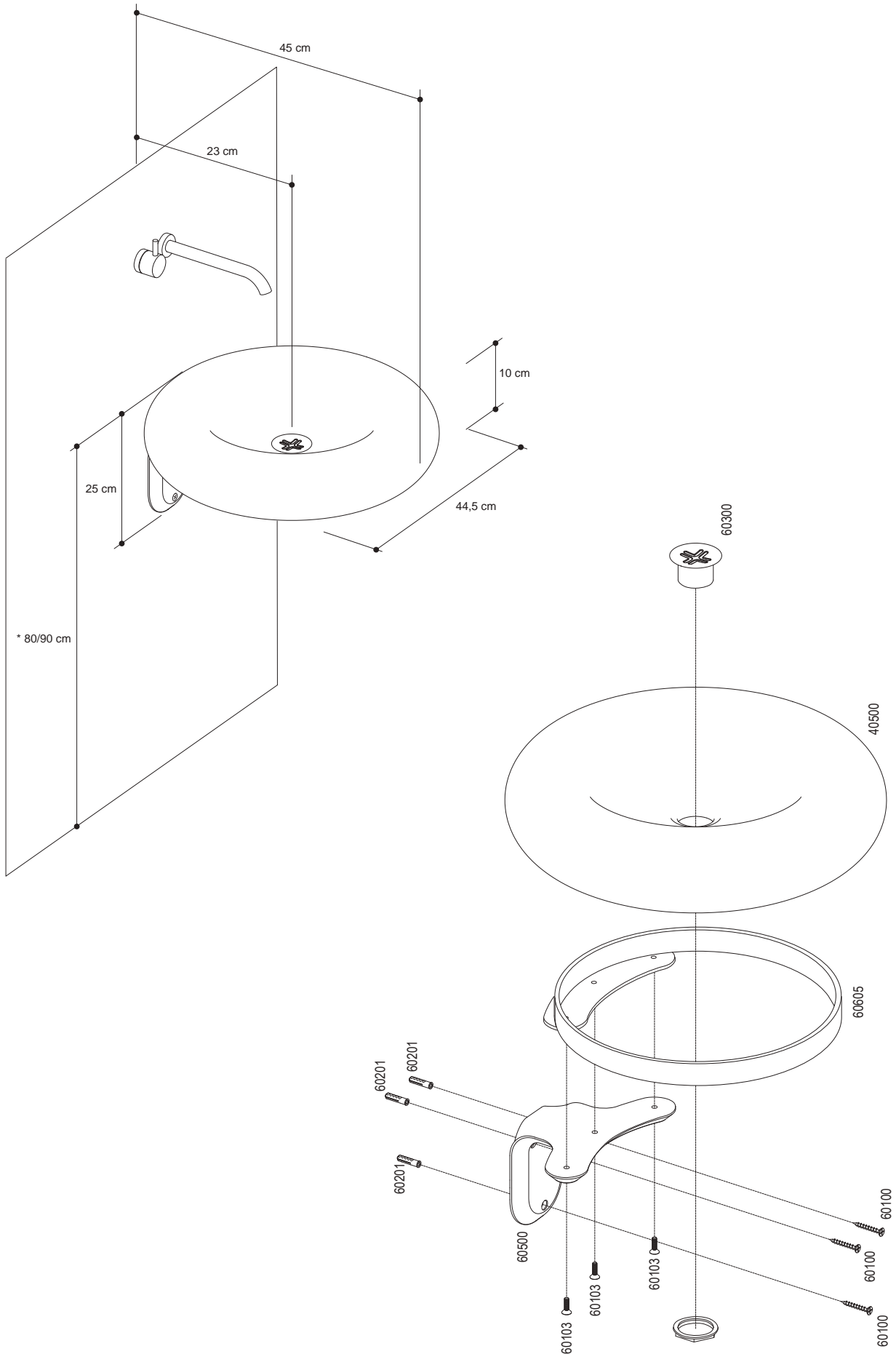


SOSO

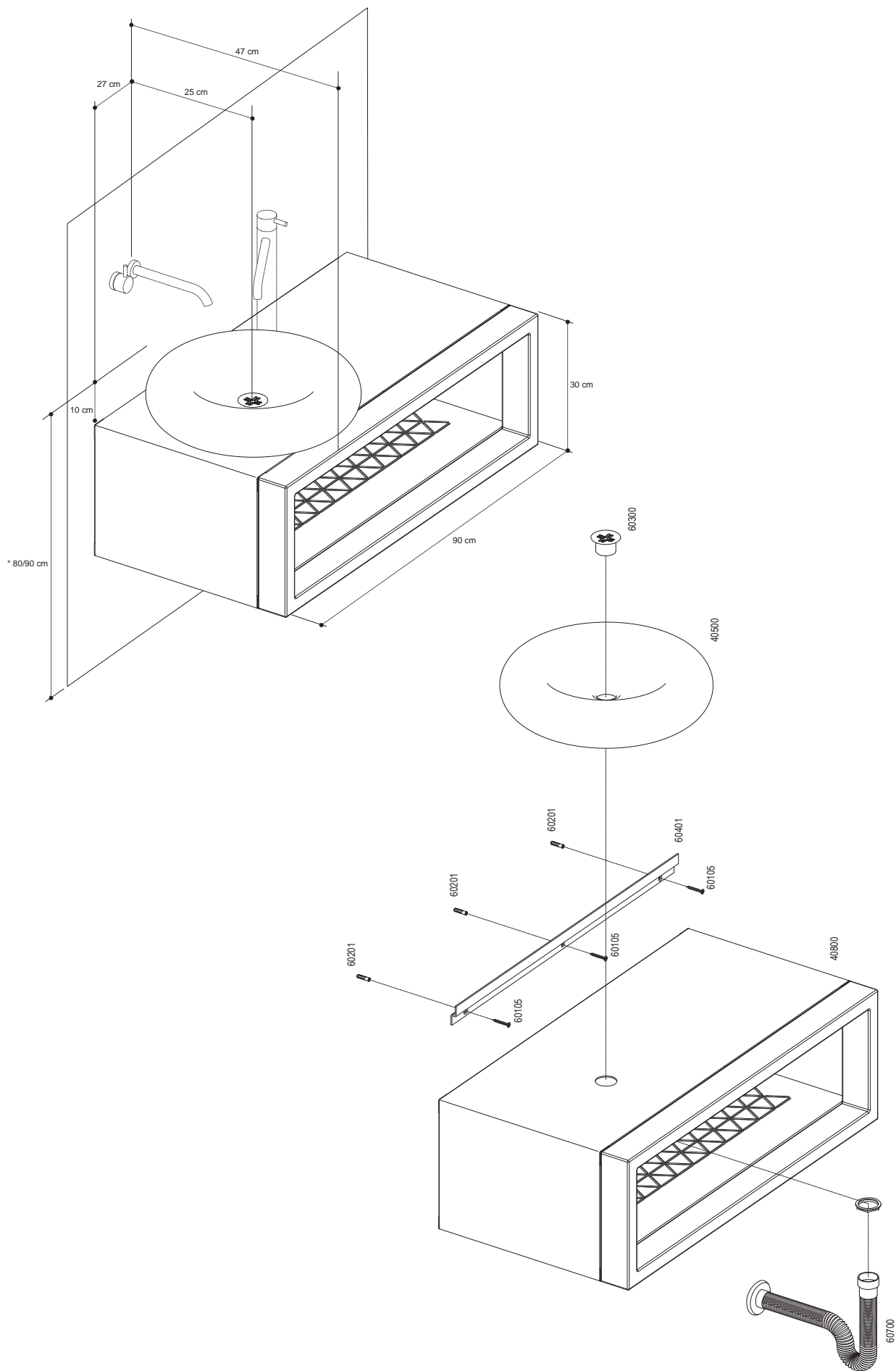




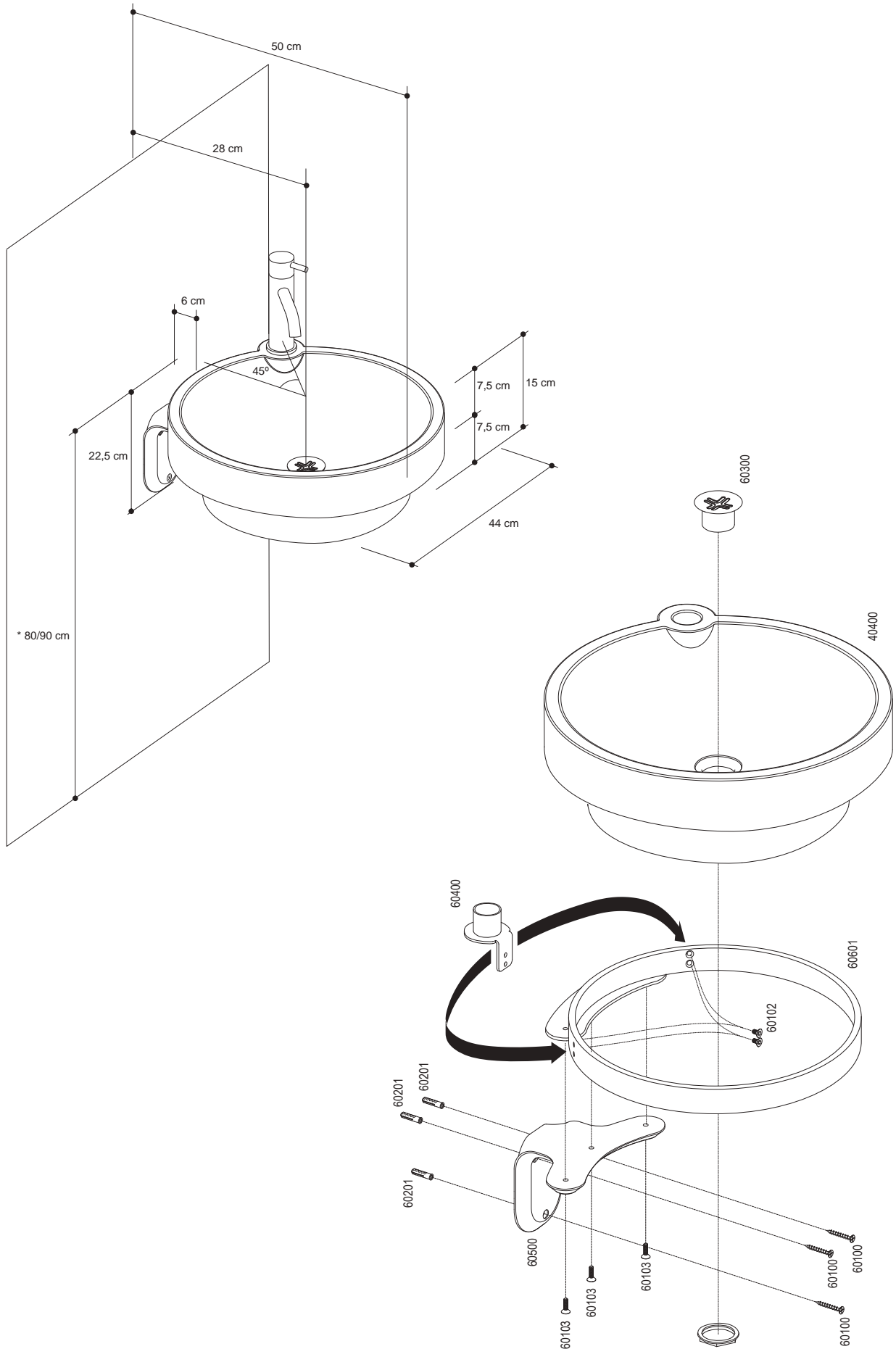
Installation Dimensions set **SALVAGENTE** Round Polyurethane Washbasin



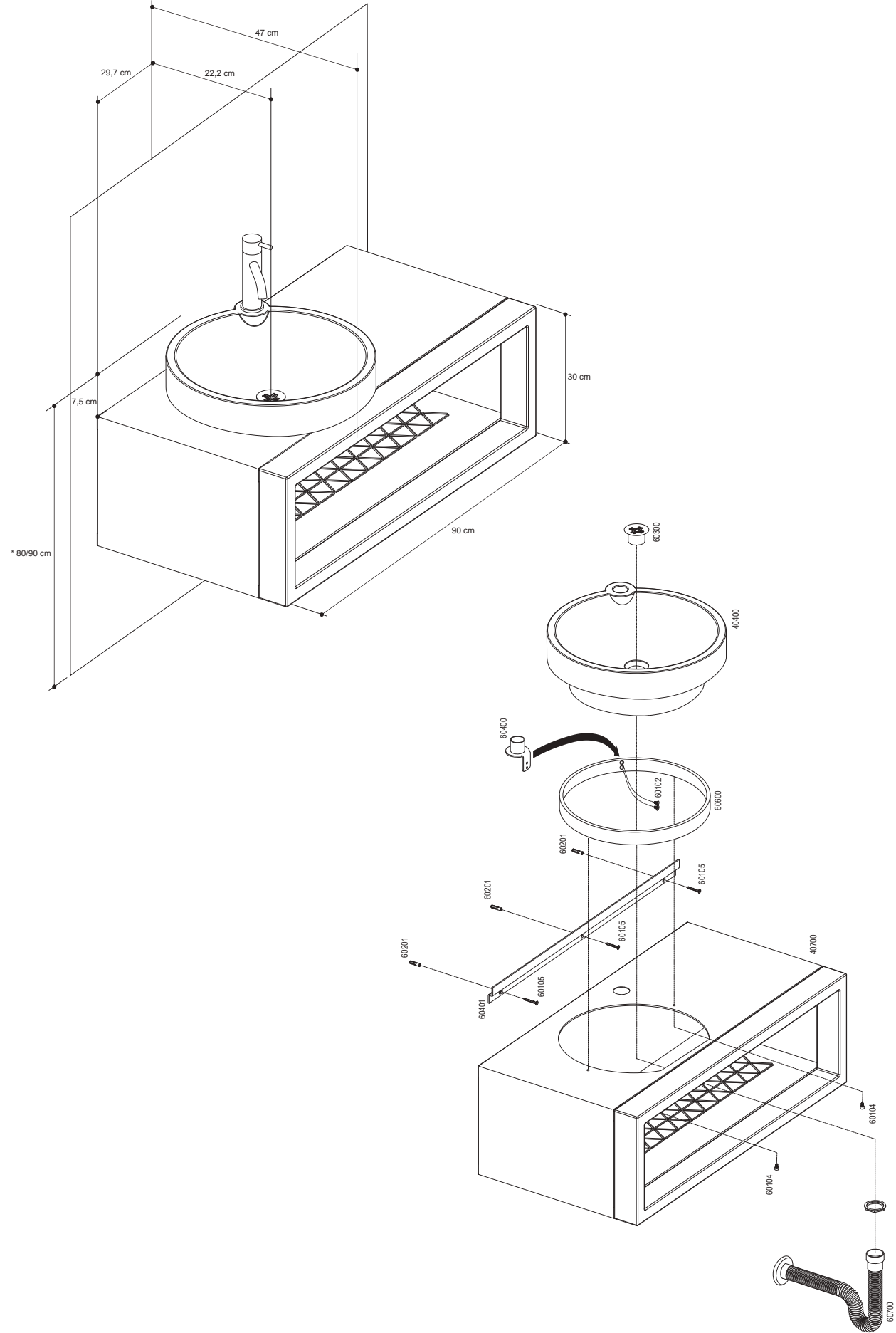
Installation Dimensions set **CASCO SALVAGENTE + SOSO**



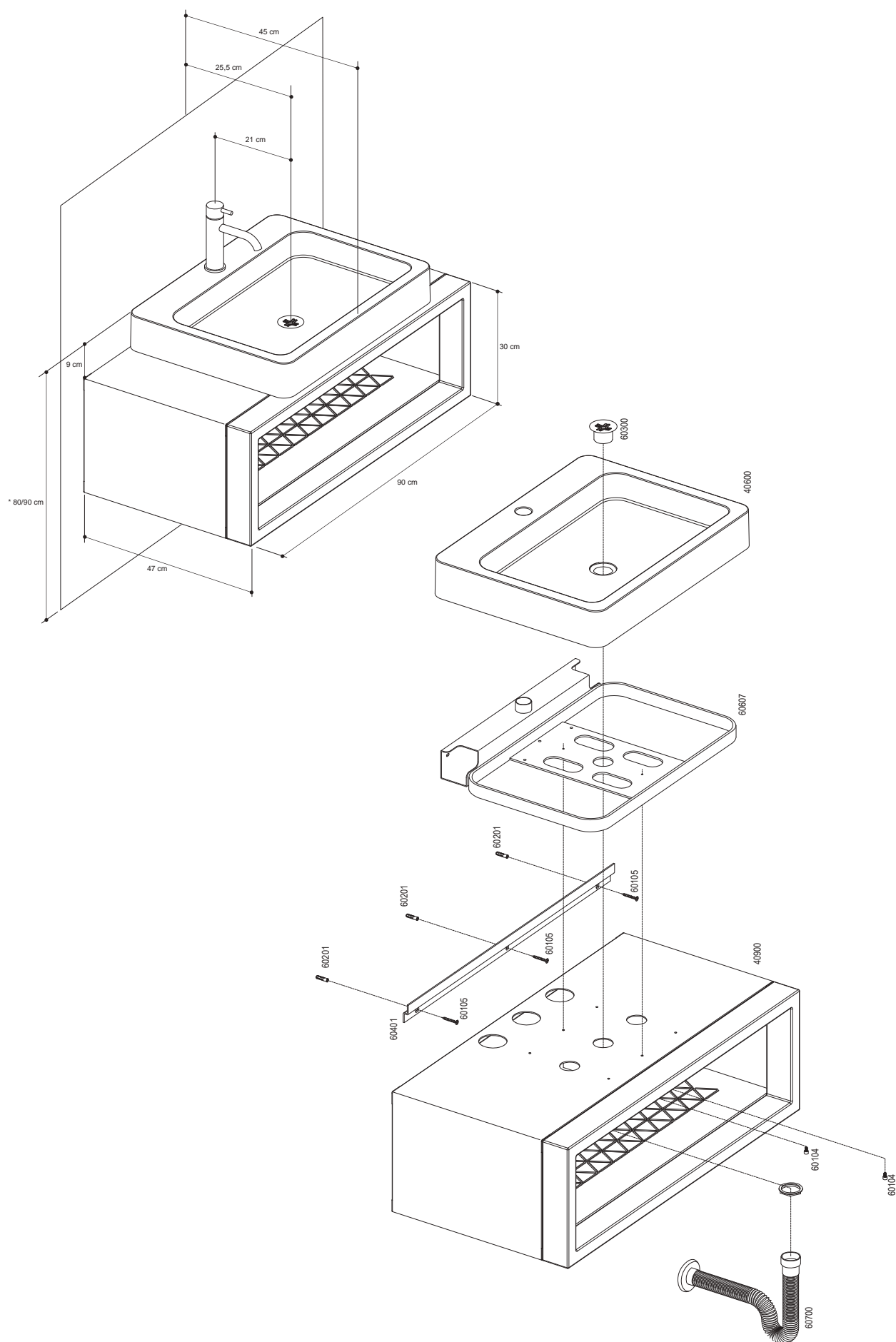
Installation Dimensions set **ORBITA** Round Polyurethane Washbasin



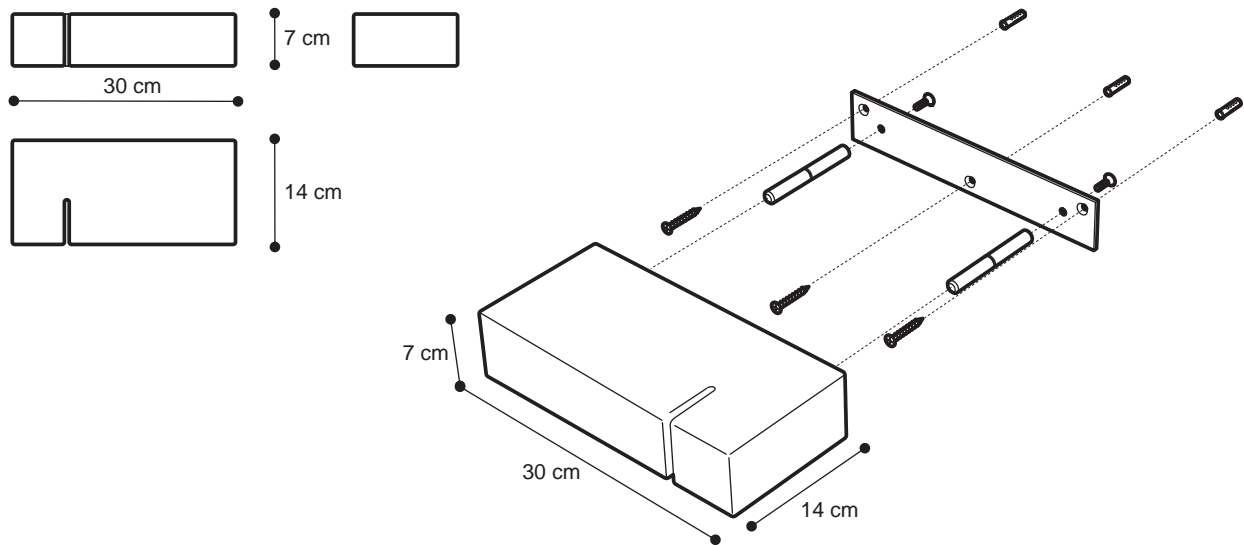
Installation Dimensions set **CASCO ORBITA + SOSO**



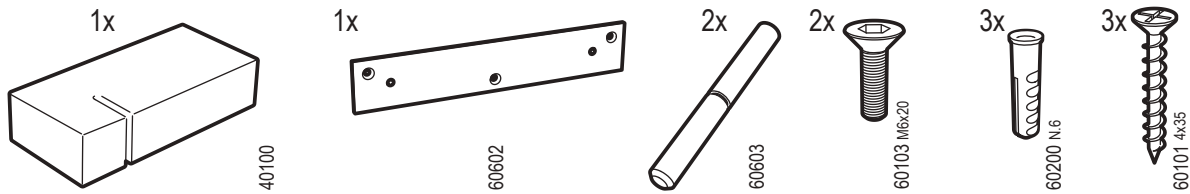
Installation Dimensions set **CASCO TIPO + SOSO**



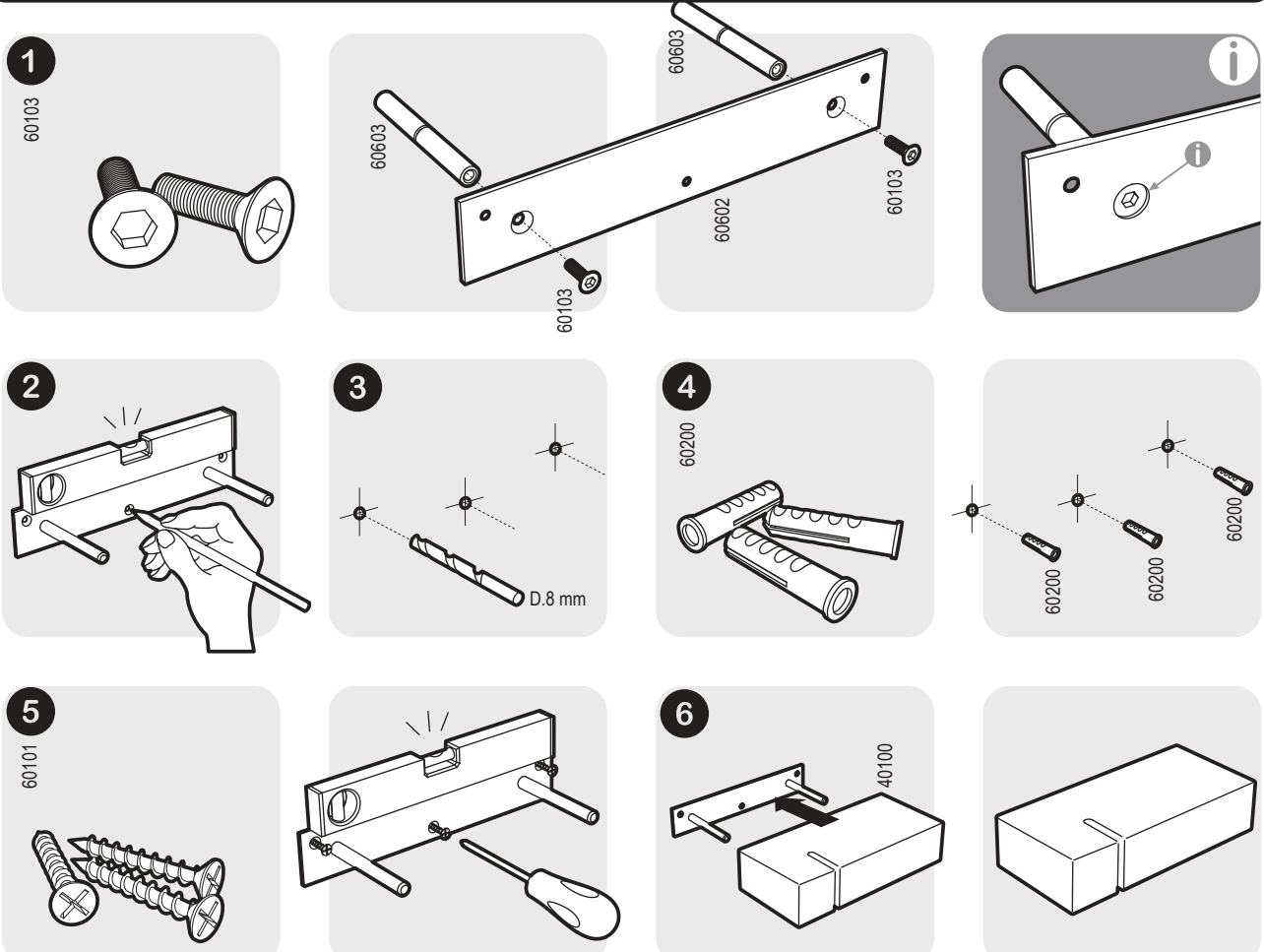
Installation Dimensions set TOXO



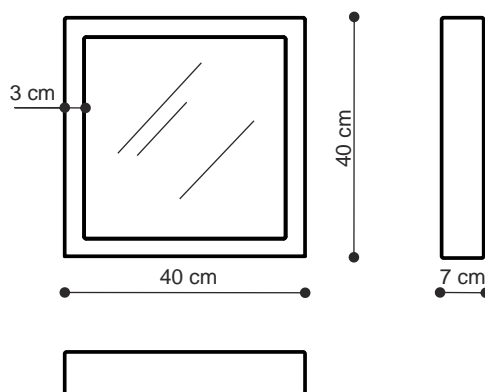
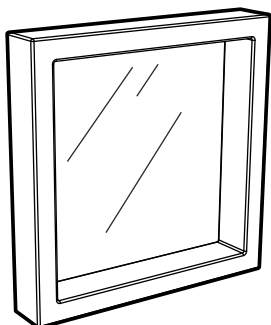
Contents of set



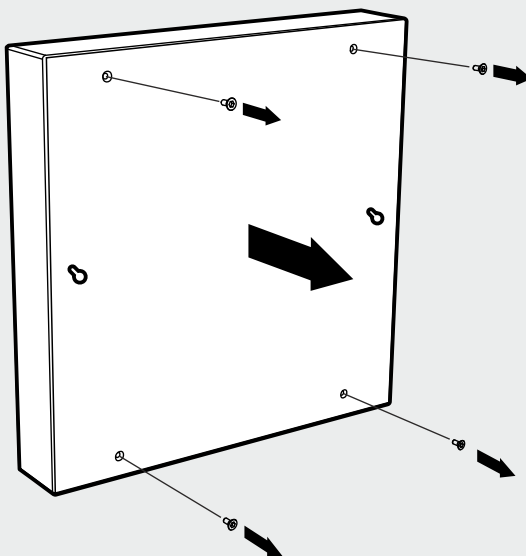
Instructions



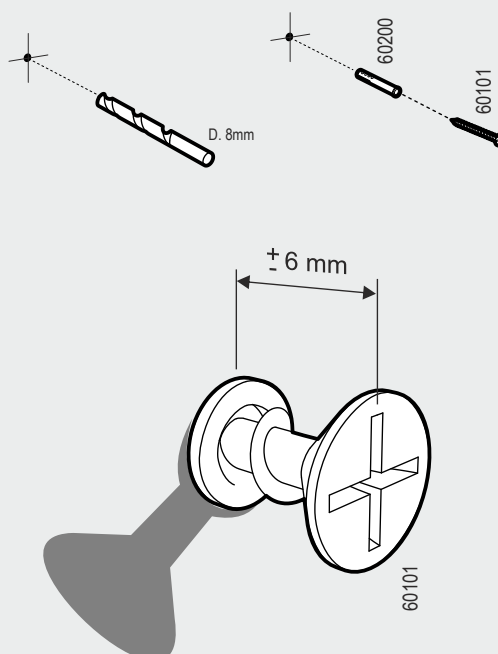
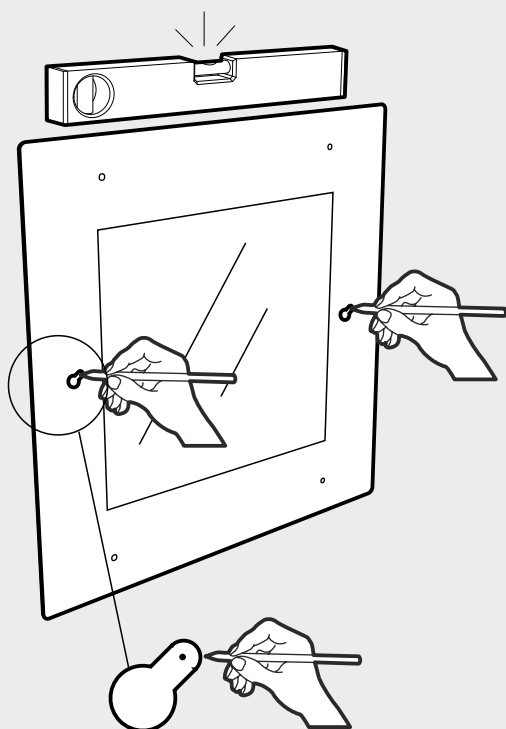
Installation Dimensions set **SOSO40 Enrasada**



1

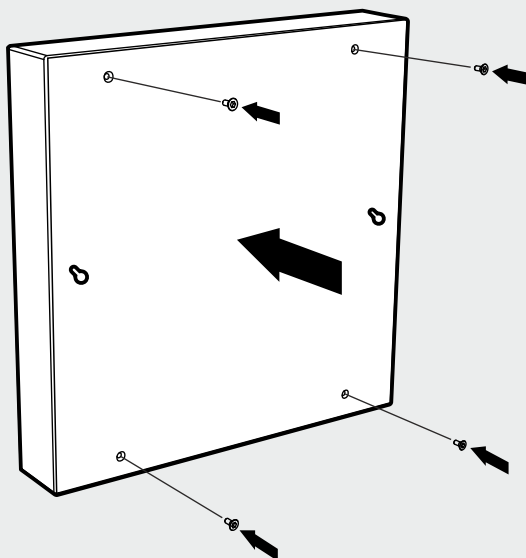


2

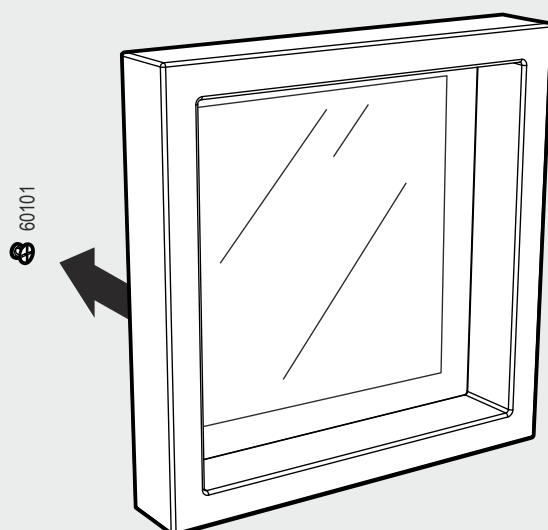


Installation Dimensions set **SOSO40 Enrasada**

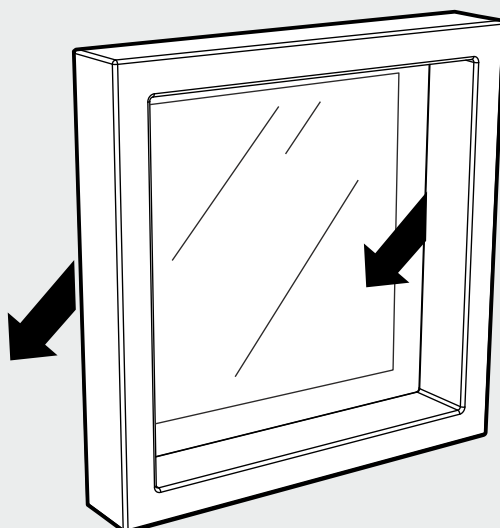
3



4



5







Bathroom

PAGE

134 - 155

140	EMO
142	GALAXY G
144	GALAXY M
146	GALAXY L
147	GALAXY RS / RC
148	7T SQUARE HEAD SHOWER
150	7T ROUND HEAD SHOWER
152	7T RECTANGULAR & OVAL HEAD SHOWER
154	SHOWER ACCESSORIES

BATHE IN PURE LUXURY

The latest technology in shower systems takes an elite place in your bathroom!

Gone are the days when showering was merely a hygiene chore. Today, it has transformed into a spa experience that relaxes your body, mind and soul; in short, it is an energy boosting experience that compensates for a relaxing massage. We want to only better the hours you spend in your shower with our exquisite range of shower systems from Edelbad. Our products are designed keeping two key factors in mind – the flexibility to give you what you want and the functionality of latest technologies prevailing in the market. As a result of this, we can guarantee that our showerheads will transport your senses to a place of unrivaled inspiration. Come indulge yourself in a luxurious experience of cleansing!

In an endeavor to recreate your bathroom culture as per the latest trends, we use the combination of conventional shower systems with revolutionary technology. With our insight into what works and what doesn't, we have taken enormous care to introduce some innovative designs through this range.

Our collection is up-to-date with every electronic break-through and hence our shower systems have an integrated panel-touch feature with multi-functional operations including light and sound control. You can enjoy the therapy of water and blend that in with meditative sound and light effects to align your senses.

The faucets in this range come with a self-generating system to save energy. Made of high grade Stainless Steel and plated with layers of chrome, they automatically put up a tough fight to corrosion or deterioration through excessive use of water. With nozzles that have an integrated self-cleaning technology, they become extremely easy to maintain and clean with no additional efforts from you.





"Better life inspired by water"

**WARRANTY**

Edelbad extends a warranty for 10 years against faulty workmanship and manufacturing defect from the date of Invoice.

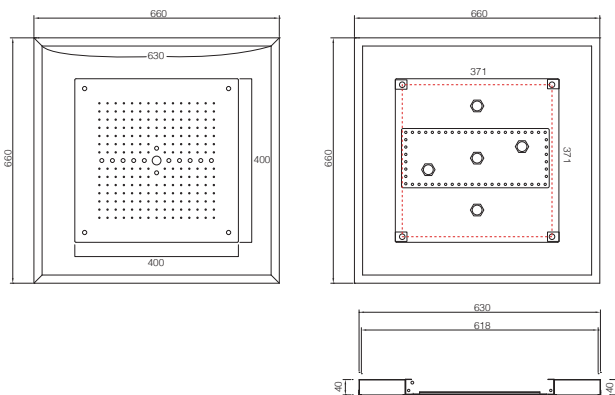
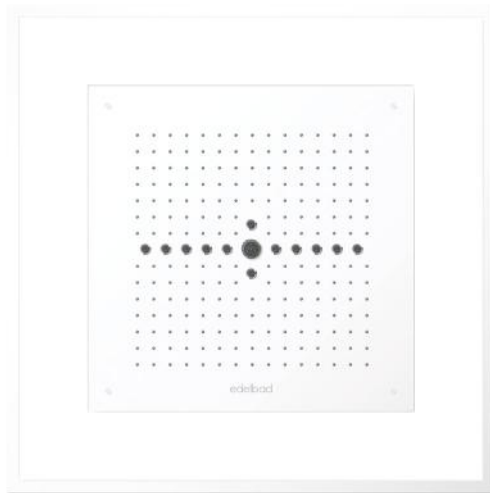
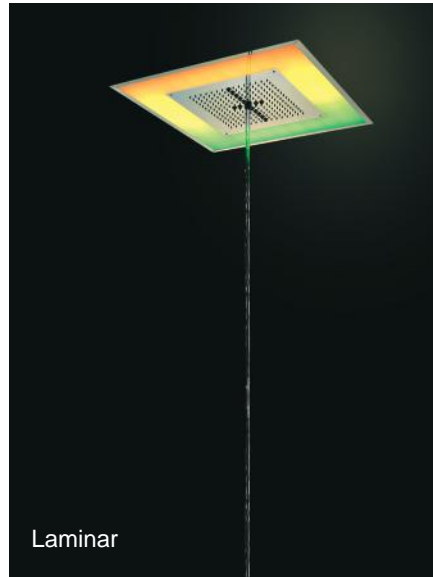
Bathroom shower systems have certainly evolved over a period of years. Shower systems have become more like an experience rather than just taking a shower to get clean. In today's time showers are quick energizing booster as well as compensates for relaxing massage. In short it adds on to an experience that cleanses the body and soul.

Hafele introduces this experience to the Indian market through Edelbad - A distinguished manufacturer of

Shower Systems. Edelbad's Shower system products are designed keeping flexibility and functionality in mind. Edelbad shower systems made of Stainless Steel Grade 304 are quick and easy to install making the upgrading of the current shower system hassle-free when renovating. Edelbad technically advanced showerheads will transport your senses to a place of unrivaled inspiration through its features of Chromo therapy. Come indulge yourself in a luxurious experience of cleansing!



EMO - Chromotherapy Head shower



EMO Shower

589.70.260

Dimensions - 660x660mm

Installation - Built-in

Outlet - Rain, Soft, Laminar

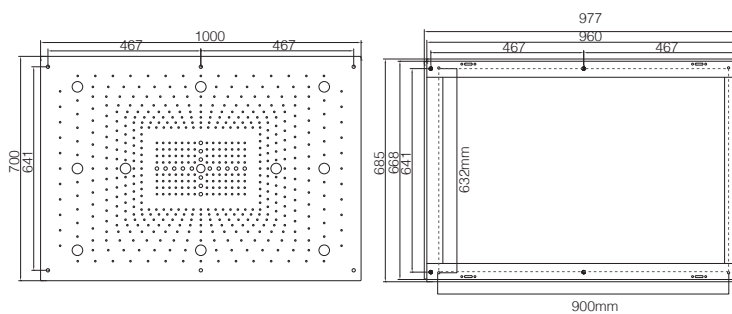
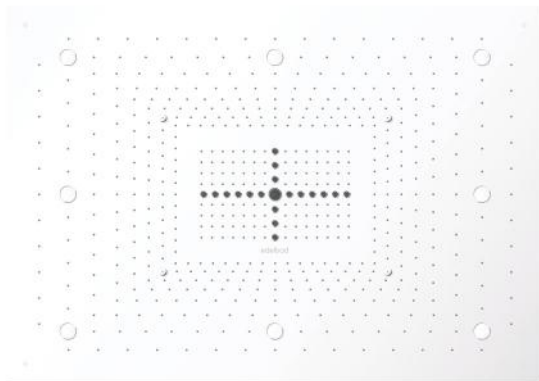
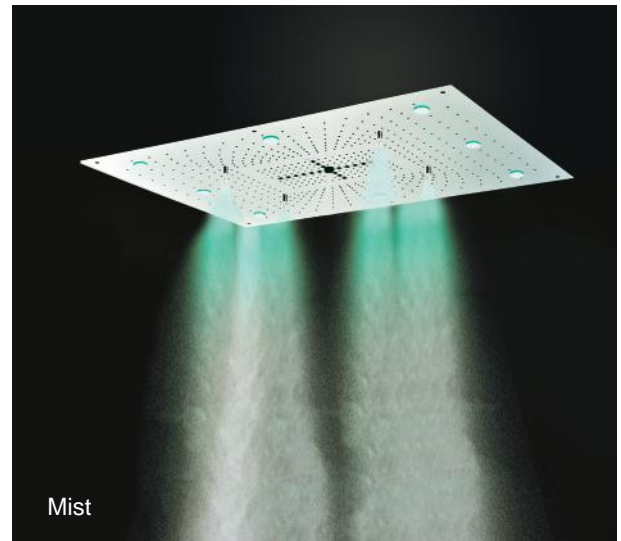
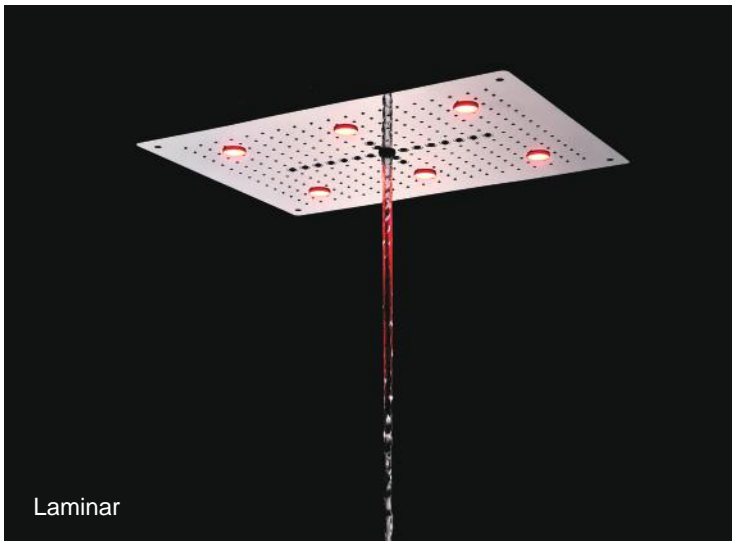
LED - RGB, 7 Panoramic

Finish - Chrome, White



Rain

GALAXY G - Chromotherapy Head shower



589.70.300

Dimensions - 1000x700mm

Installation - Built-in

Outlets - Rain, Soft, Laminar, Mist

LED - RGB

Finish - Chrome

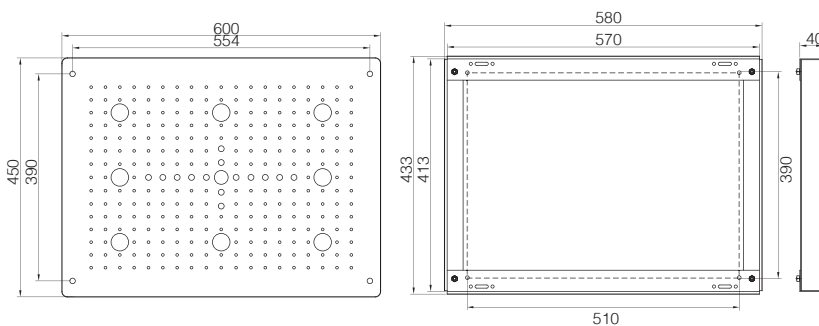
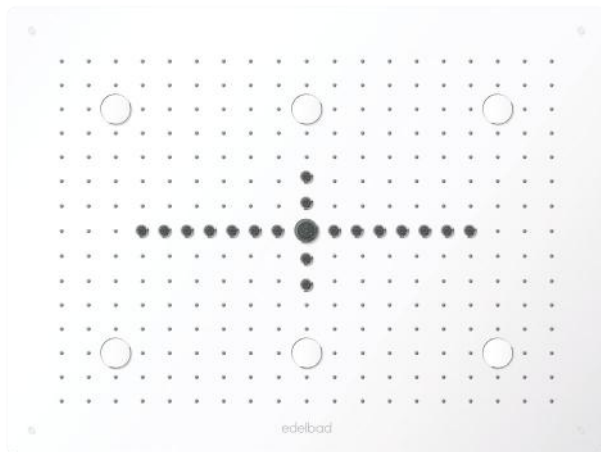


Rain



Soft

GALAXY M - Chromotherapy Head shower



589.70.290

Dimensions - 600x450mm

Installation - Built-in

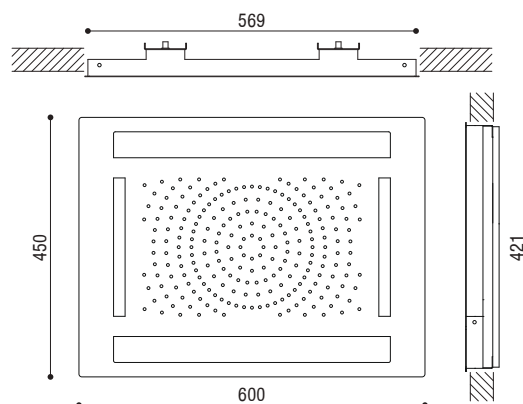
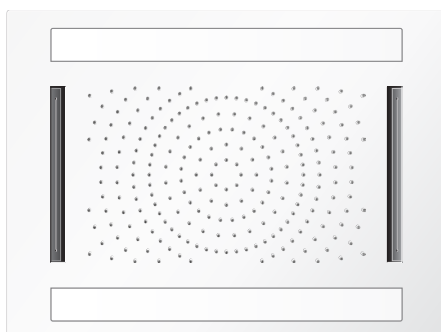
Outlets - Rain, Soft, Laminar

LED - RGB

Finish - Chrome



GALAXY L - Chromotherapy Head shower



589.70.150

Dimensions - 600x450mm

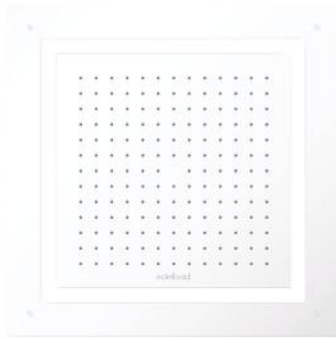
Installation - Built-in

Outlet - Rain, Waterfall

LED - RGB

Finish - Chrome, White

GALAXY RS - Chromotherapy Head shower



589.70.280

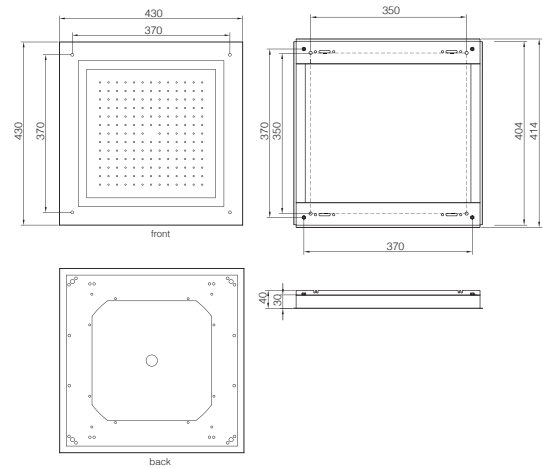
Dimensions - 430x430mm

Installation - Built-in

Outlet - Rain

LED - RGB

Finish - Chrome, White



GALAXY RC - Chromotherapy Head shower



589.70.270

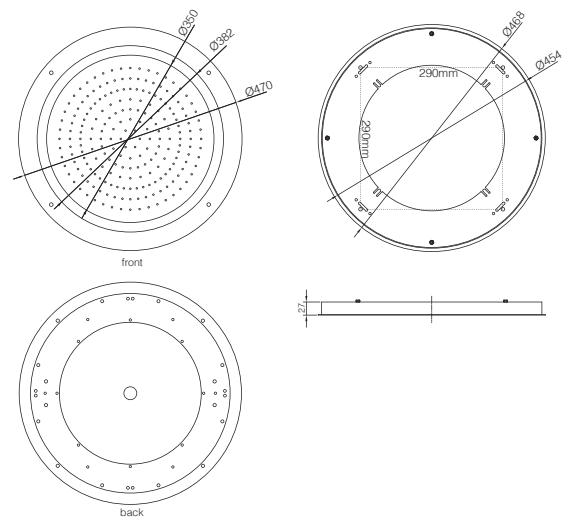
Dimensions - \varnothing 470

Installation - Built-in

Outlet - Rain

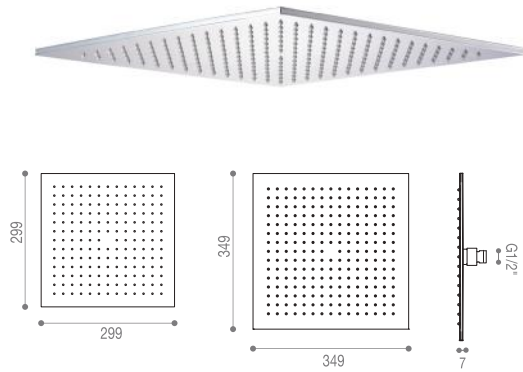
LED - RGB, 7 Panoramic

Material - Chrome, White





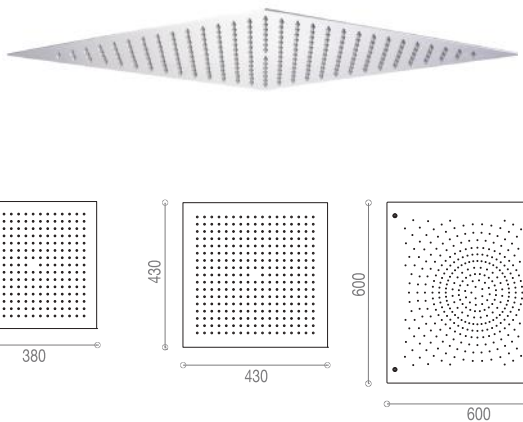
7T Square head shower



7T SQUARE (BALL JOINT) Stainless Steel 304 Grade

589.70.240 - 300x300mm

589.70.241 - 350x350mm



7T SQUARE (CEILING MOUNTING) Stainless Steel 304 Grade

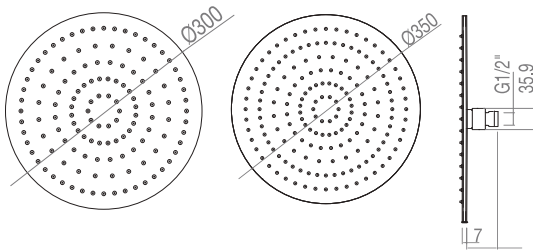
589.70.243 - 380x380mm

589.70.244 - 430x430mm

589.70.246 - 600x600mm



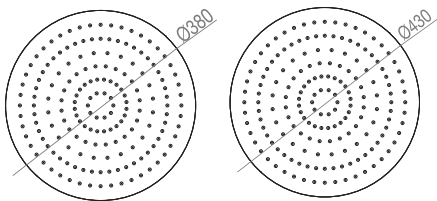
7T Round head shower



7T ROUND (Ball Joint)
 Stainless Steel 304 Grade

589.70.247 - Ø300mm

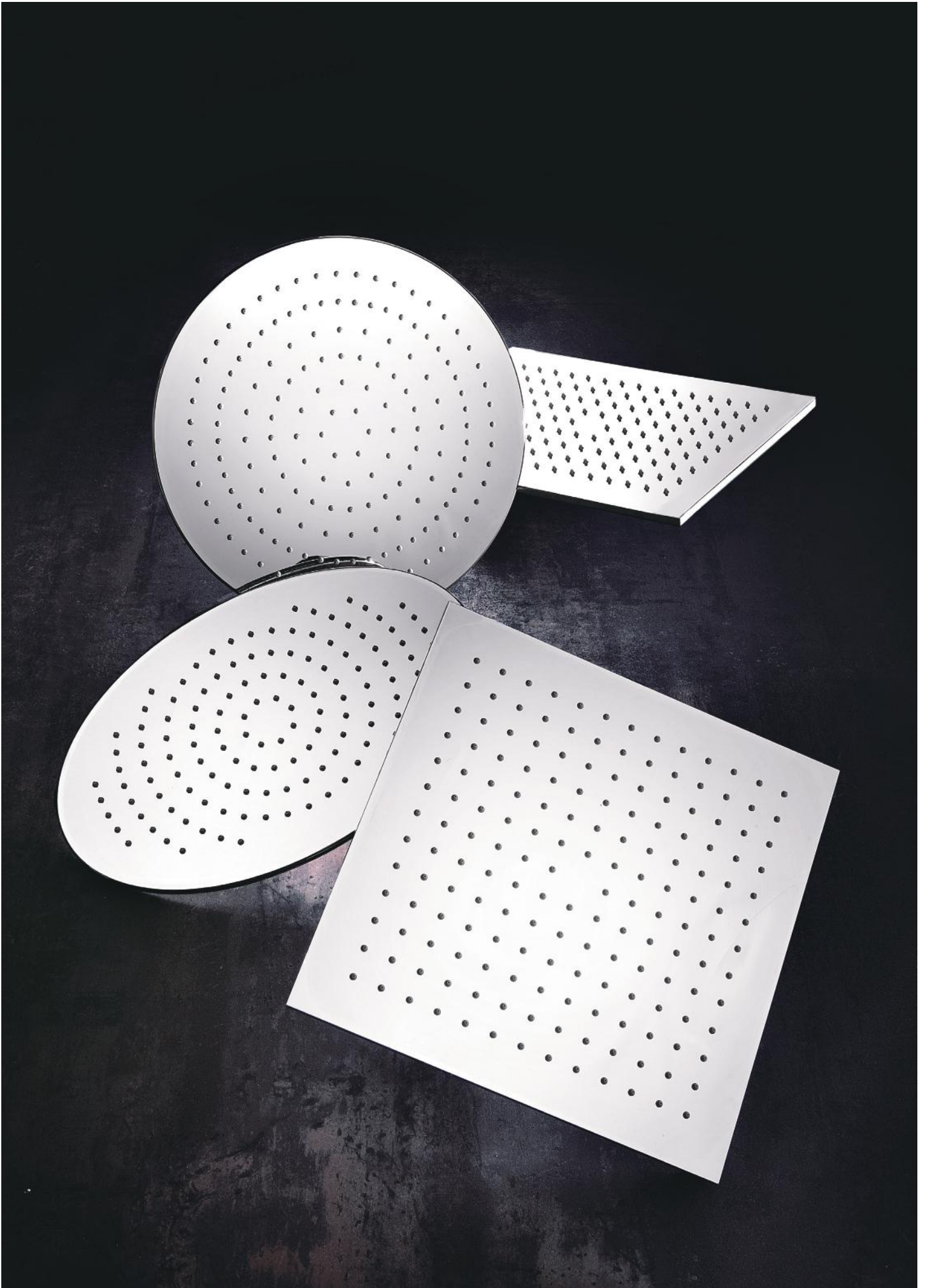
589.70.248 - Ø350mm



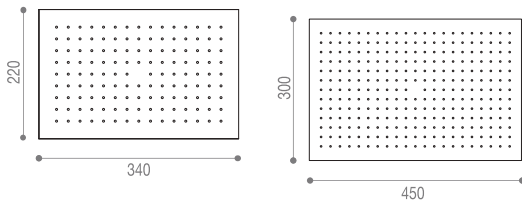
ROUND (CEILING MOUNTING)
 Stainless Steel 304 Grade

589.70.250 - Ø380mm

589.70.251 - Ø430mm



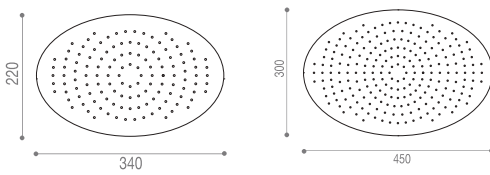
7 T Rectangular & Oval head shower



7T RECTANGULAR (BALL JOINT)
 Stainless Steel 304 Grade

589.70.252 - 340x220mm

589.70.253 - 450x300mm

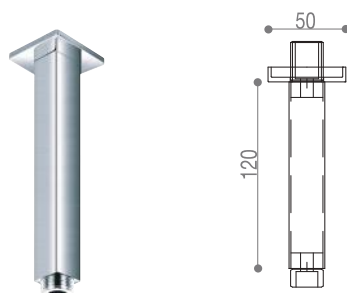


7T OVAL (BALL JOINT)
 Stainless Steel 304 Grade

589.70.255 - 340x220mm

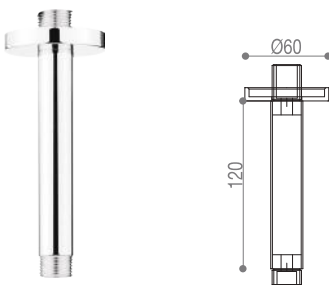
589.70.256 - 450x300mm

Shower Accessories



CEILING ARM SQUARE

589.70.900 - 120x50mm



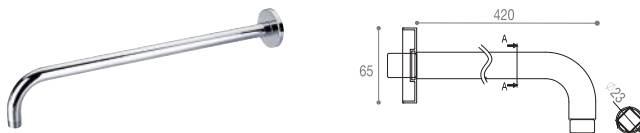
CEILING ARM ROUND

589.70.910 - 120x60mm



WALL ARM SQUARE

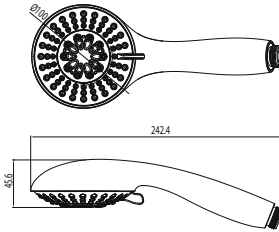
589.70.903 - 400x65mm



WALL ARM ROUND

589.70.913 - 420x65mm

Shower Accessories



Ultra slim, enhanced airwater mixing engine, 5 Functions

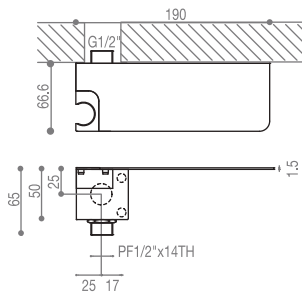
Finish: Chrome

589.70.920 - Ø100mm



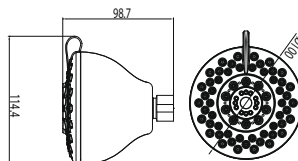
METAL HOSE

589.70.950



HANGER WITH SHELF

589.70.960



Easy-to-clear technology, low water pressure performance, water saving, 3 Functions

589.70.930

**Mumbai Design Centre:**

#2 Filix Building, Opp. Asian Paints,
L.B.S. Marg, Bhandup (West),
Mumbai - 400 078.
Tel.: 022 2596 9660/ 2596 9787/2594 7305

New Delhi Design Centre:

D-89 , 1st Floor, Okhla Phase-I,
New Delhi - 110 020.
Tel.: 011-66574999 • Fax: 011-41605482.

Bangalore Design Centre:

No. 2/1, "Shiv Manor",
Langford Road, Shanthi Nagar,
Bangalore – 560 027.
Tel.: 080 4132 6116 • Fax: 080 4132 6226.

Hyderabad Design Centre:

Park Side, 8-2-348/3/4, Road No. 3,
Above Almond House, Banjara Hills,
Hyderabad - 500 034.
Tel.: 040 6666 8851 • Fax: 040 6666 8852.

Kolkata Design Centre:

PS PACE, Premises No. 1/1A,
Mahendra Roy Lane, Topsia,
Kolkata - 700 046.
Mob.: 033 40086814 / 033 40089268
Fax: 033 24988020.

Chennai Design Centre:

New No. 20, (Old No. 63), 1st Main Road,
Besant Nagar, Chennai - 600 090.
Tel.: 044 - 4215 1542 • Fax: 044 2446 0922.

Pune Office:

Office No. 12, Vastushree Complex,
Survey No.587, Near Hyde Park,
Gultekdi, Market Yard, Pune - 411 037.
Tel.: 020 2426 6264
Fax: 020 2426 6274.

Ahmedabad Office:

Hafele India Pvt. Ltd., Office No. 302, Third
Floor, Shangrila Arcade, Near Shyamal
Cross Road, Satellite, Ahmedabad - 380015.
Mob.: Vijay Gathia - + 91 9825 80 9950
Mob.: Bhushan Jadhav - + 91 9712 91 6193

Sri Lanka:**Hafele Design Centre:**

448, Galle Road, Rawathawatta,
Moratuwa, Sri Lanka.
Tel: +94 112 644 600.

Hafele Design Centre:

52, Nandana Gardens
(On Duplication Road), Colombo 04.
Tel: +94 112 500 501.
Fax: 0094 112 500 553.

Hafele Boutique:

747A, Sirimawo Bandaranayaka
Mawatha, Mulgampola, Kandy, Sri Lanka.
Tel: +94 812 223 338.

Bangladesh:

Tilottama Design Studio
Road : 138, House : 8/A,
Gulshan 1, Dhaka - 1212
Tel.: 880-2-9886526
Mob.: 8801-672434394

Nepal

Monika Home Decor
Kathmandu Plaza, Kamalldhi,
Kathmandu, Nepal
Tel.: 00 9851 030 556 /
00 977 9818496082 / 9851030556

Bhutan

S C & K Marketing and Sales
First Floor, Hotel 89 Building
Chorten Lam, Thimphu, BHUTAN
Tel.: 975 2 333419 / 77114228 /
17600663

H'AFELE

Mumbai Corporate Office:

Office No. 3, Building "A", BETA,
I Think Techno Campus, Off J.V.L.R.,
Opp. Kanjurmarg East, Mumbai – 400 042.
Tel.: 022 6142 6100 • Fax: 022 6702 0531.

For Enquiries SMS "HAFELE" to 56070

Toll Free Customer Care: 1800 266 6667
customer@hafeleindia.com
info@hafeleindia.com



<http://facebook.com/hafeleindia>



<http://www.twitter.com/hafeleindia>

